



ENGINEERING CLARIFICATION

EC TITLE: Facility 100 Joists
PROJECT: 3 Kings Water Treatment Plant

EC NO.: 65
DATE: 9/1/2020
STATUS: Acknowledged

SECTION 1: BY CONTRACTOR

QUESTION:

Wind and seismic loads for joists were not included in the loading diagrams on the Drawings.

DRAWING NO.: 100-S-5013 STRUCTURAL - FACILITY 100 - **POTENTIAL COST IMPACT:**
JOIST PROFILES - JOIST J100-1

SPECIFICATION SECTION:

POTENTIAL SCHEDULE IMPACT:

PROPOSED SOLUTION:

See attached drawings for wind and seismic loading of joists.

COMMENTS:

INITIATOR: Petty, Tim/SLC

PRIORITY: Normal

REQUESTED RESPONSE DATE: 9/15/2020

SECTION 2: BY REVIEWER

RESPONSE:

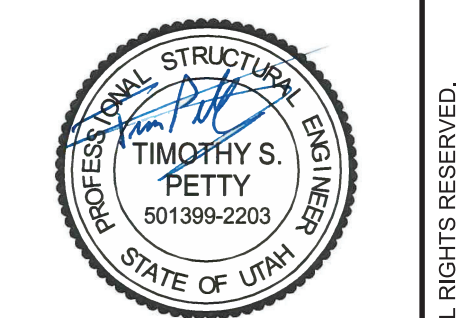
COMMENTS:

REVIEWED BY: Sam Conant

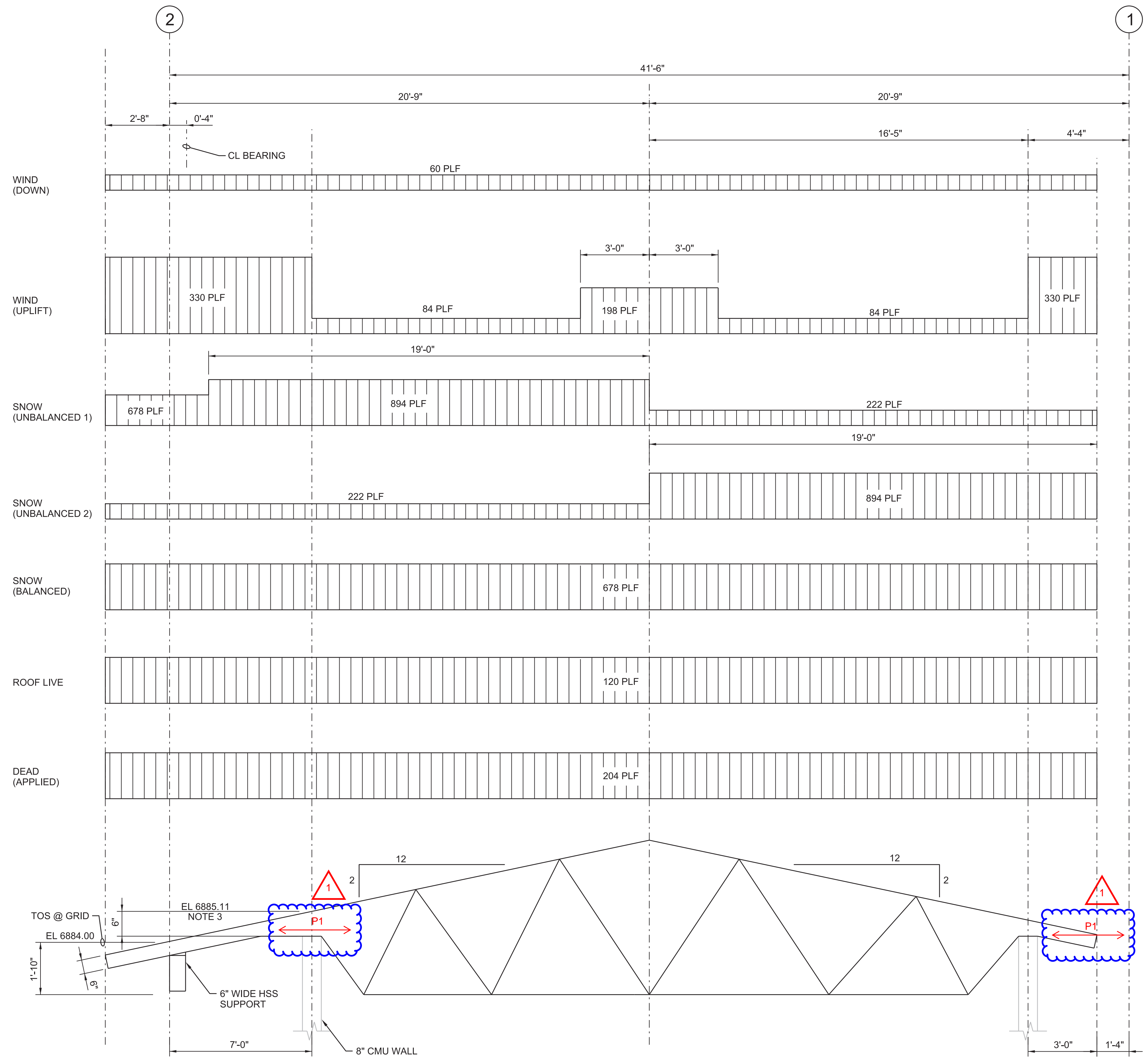
REVIEWED DATE: 10/13/2020

GENERAL NOTES

- FOR GENERAL STRUCTURAL NOTES, SEE DRAWINGS 000-GS-0001 AND 000-GS-0002.
- WIND LOADS SHOWN SHALL BE APPLIED PERPENDICULAR TO THE TOP CHORD OF THE TRUSS.
- CONTRACTOR SHALL COORDINATE JOIST DEPTH AT BEARING PLATE WITH JOIST MANUFACTURER. JOIST BEARING DEPTH SHOWN IS MINIMUM.



DIGITALLY SIGNED:
02/10/2020
P SWAIM



POINT LOAD TABLE	
LOAD	P1
WIND	1.2 KIP
SEISMIC	1.4 KIP

POINT LOAD IS APPLIED AT WALL TO JOIST CONNECTION AND SHOULD BE APPLIED IN BOTH DIRECTIONS

1 JOIST J100-1
3/8"=1'-0"

ZEHREN AND ASSOCIATES, INC.
LANDSCAPE ARCHITECTURE
1000 West 1000 South, Suite 200
Salt Lake City, Utah 84119
801-462-2222 / 801-462-1000

JACOBS
STRUCTURAL
FACILITY 100
JOIST PROFILES
JOIST J100-1

3Kings WTP Phase III Design
Park City Municipal Corporation
Park City, Utah

REVISION
NO. DATE DSGN DR M RUSIE R FORREST P SWAIM
1 08/31/2020 ENGINEERING CLARIFICATION #65 TP BY APVD

VERIFY SCALE	BAR IS ONE INCH ON ORIGINAL DRAWING.
DATE	02/10/2020
PROJ	694342
DWG	100-S-5013
SHEET	413 of 911

ISSUED FOR CONSTRUCTION

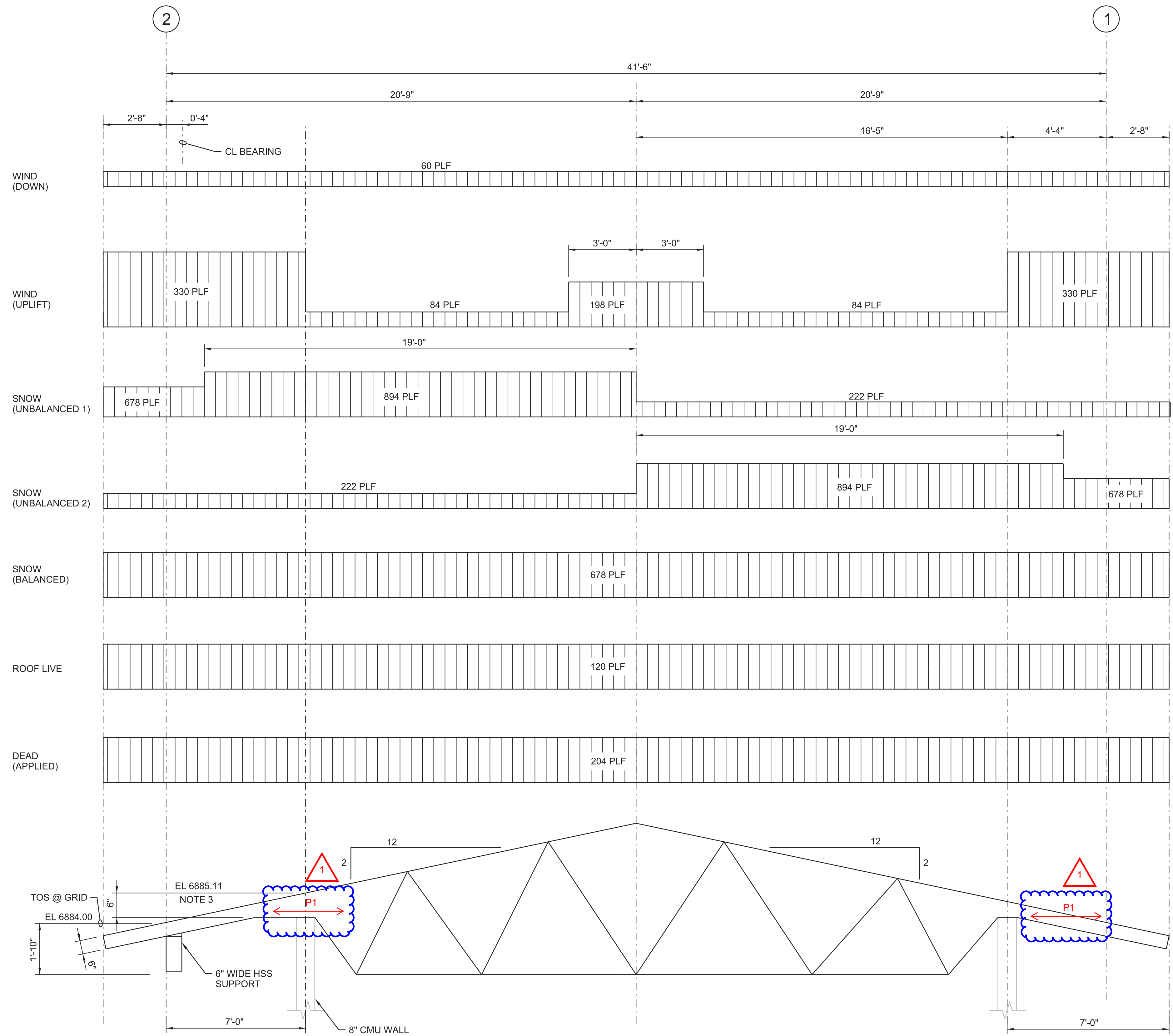
GENERAL NOTES

- FOR GENERAL STRUCTURAL NOTES, SEE DRAWINGS 001-GS-0001 AND 001-GS-0002.
- WIND LOADS SHOWN SHALL BE APPLIED PERPENDICULAR TO THE TOP CHORD OF THE TRUSS.
- CONTRACTOR SHALL COORDINATE JOIST DEPTH AT BEARING PLATE WITH JOIST MANUFACTURER. JOIST BEARING DEPTH SHOWN IS MINIMUM.



DIGITALLY SIGNED:
02/10/2020

APVD	P SWAIM
BY	TP
REVISION	CHK
NO.	DATE
1	08/31/2020
DSGN	T PETTY
DR	M RUSIE
CHK	R FORREST
APVD	



POINT LOAD TABLE	
LOAD	P1
WIND	1.2 KIP
SEISMIC	1.4 KIP

POINT LOAD IS APPLIED AT WALL TO JOIST CONNECTION AND SHOULD BE APPLIED IN BOTH DIRECTIONS

1 JOIST J100-2
3/8"=1'-0"

ZEHREN AND ASSOCIATES, INC.
ARCHITECTURE, PLANNING, INTERIORS
LANDSCAPE ARCHITECTURE
475 West Center Street, Suite 200
P.O. Box 1970, West Jordan, Utah 84088
801-488-2227 FAX 801-488-1300

JACOBS
STRUCTURAL
FACILITY 100
JOIST PROFILES
JOIST J100-2

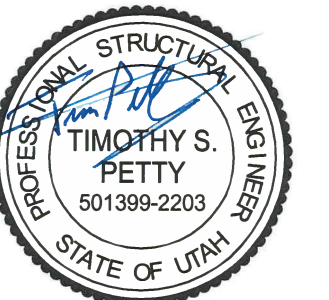
3Kings WTP Phase III Design
Park City Municipal Corporation
Park City, Utah

ISSUED FOR CONSTRUCTION

VERIFY SCALE	
BAR IS ONE INCH ON ORIGINAL DRAWING.	
DATE	02/10/2020
PROJ	694342
DWG	100-S-5014
SHEET	414 of 911

GENERAL NOTES

- 1. FOR GENERAL STRUCTURAL NOTES, SEE DRAWINGS 001-GS-0001 AND 001-GS-0002.
- 2. WIND LOADS SHOWN SHALL BE APPLIED PERPENDICULAR TO THE TOP CHORD OF THE TRUSS.
- 3. CONTRACTOR SHALL COORDINATE JOIST DEPTH AT BEARING PLATE WITH JOIST MANUFACTURER. JOIST BEARING DEPTH SHOWN IS MINIMUM.



DIGITALLY SIGNED:
02/10/2020

APVD	P SWAIM
BY	TP
REVISION	CHK
NO.	DATE
1	08/31/2020
DR	T PETTY
DR	M RUSIE
DR	R FORREST
REVISION	APVD
ENGINEERING CLARIFICATION #66	

ZEHREN AND ASSOCIATES, INC.
ARCHITECTURE PLANNING INTERIORS
LANDSCAPE ARCHITECTURE
475 West Center Street, Suite 200
P.O. Box 1979, Arroyo Colorado, Utah
84004-1979
801.333.6227 FAX 801.333.6230

3Kings WTP Phase III Design
Park City Municipal Corporation
Park City, Utah

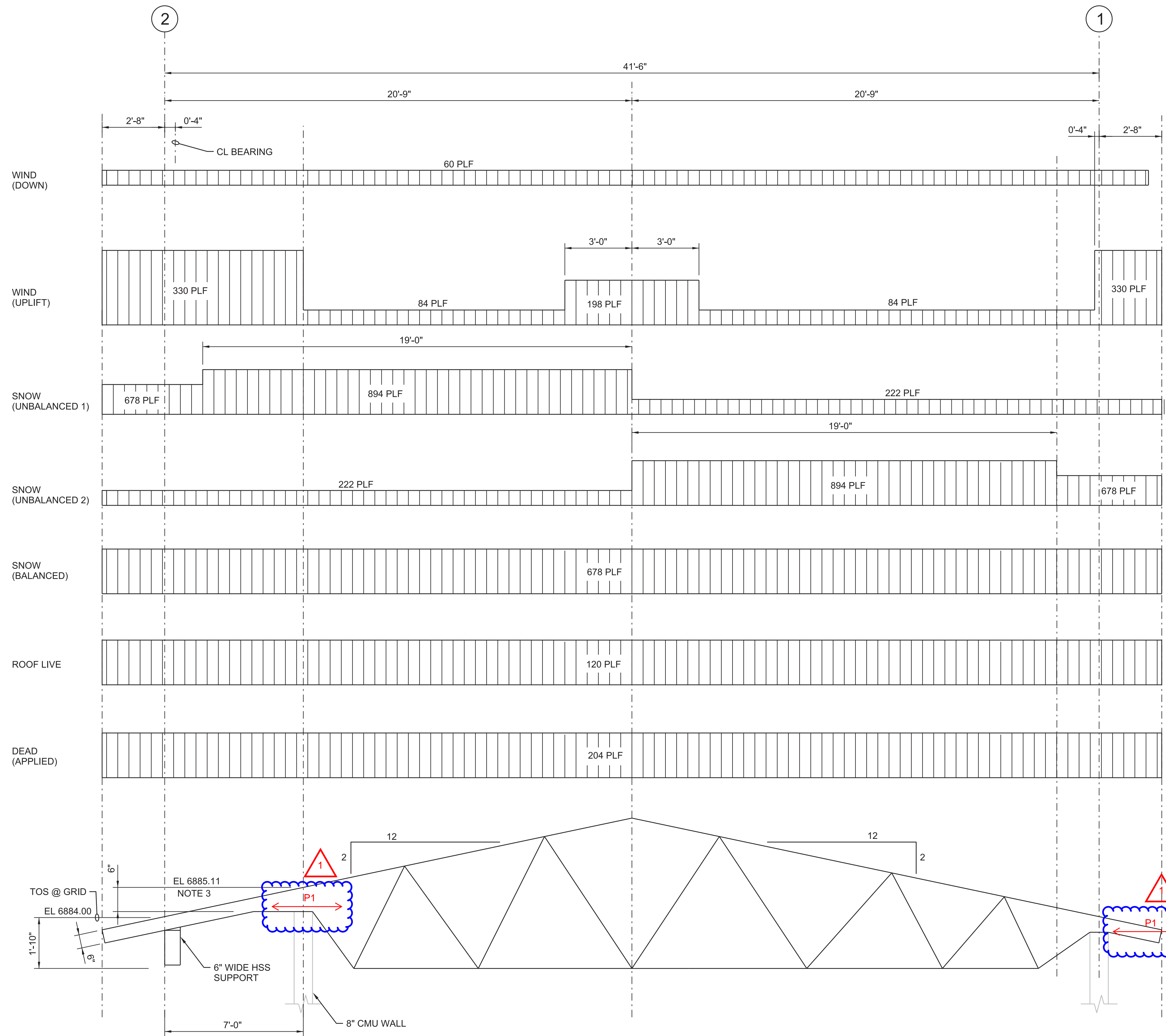


STRUCTURAL
FACILITY 100
JOIST PROFILES
JOIST J100-3

ISSUED FOR CONSTRUCTION

POINT LOAD TABLE	
LOAD	P1
WIND	1.2 KIP
SEISMIC	1.4 KIP

POINT LOAD IS APPLIED AT WALL TO JOIST CONNECTION AND SHOULD BE APPLIED IN BOTH DIRECTIONS

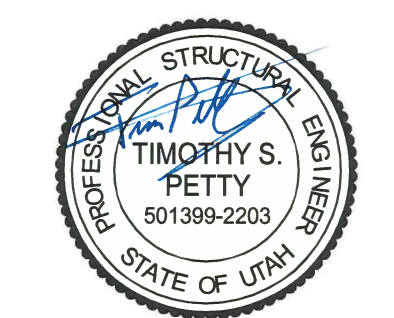


1 JOIST J100-3
3/8"=1'-0"

VERIFY SCALE	
BAR IS ONE INCH ON ORIGINAL DRAWING.	
DATE	02/10/2020
PROJ	694342
DWG	100-S-5015
SHEET	415 of 911

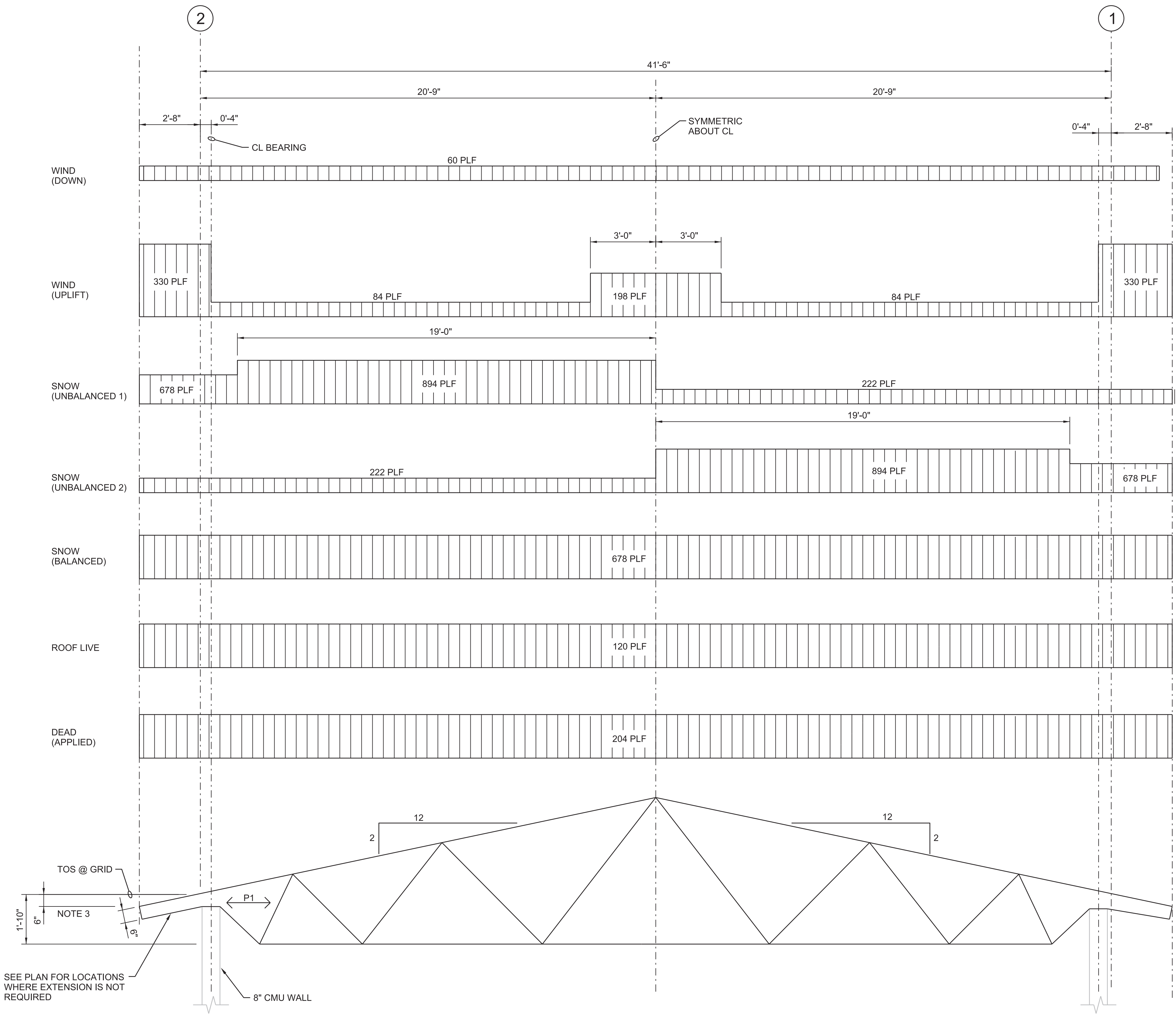
GENERAL NOTES

- FOR GENERAL STRUCTURAL NOTES, SEE DRAWINGS 001-GS-0001 AND 001-GS-0002.
- WIND LOADS SHOWN SHALL BE APPLIED PERPENDICULAR TO THE TOP CHORD OF THE TRUSS.
- CONTRACTOR SHALL COORDINATE JOIST DEPTH AT BEARING PLATE WITH JOIST MANUFACTURER. JOIST BEARING DEPTH SHOWN IS MINIMUM.



DIGITALLY SIGNED:
02/10/2020

BY	TP	APVD	P SWAIM
REVISION	CHK	APVD	R FORREST
NO.	DATE	DR	T PETTY
1	08/31/2020	DSGN	M RUSIE
ENGINEERING CLARIFICATION #65		REVISION	



LOAD	P1	P2
DEAD	-	NA
ROOF LIVE	-	NA
SNOW	-	NA
WIND	1.6 KIP	NA
SEISMIC	1.9 KIP	NA

LOAD	P1	P2
DEAD	-	NA
ROOF LIVE	-	NA
SNOW	-	NA
WIND	1.6 KIP	NA
SEISMIC	1.9 KIP	NA

POINT LOAD IS APPLIED AT WALL TO JOIST CONNECTION AND SHOULD BE APPLIED IN BOTH DIRECTIONS

1 JOIST J100-4 AND J100-5
3/8"=1'-0"

ZEHREN AND ASSOCIATES, INC.
ARCHITECTURE, PLANNING, INTERIORS
LANDSCAPE ARCHITECTURE
475 West Center Street, Suite 200
Park City, Utah 84302
801.225.2222 / zehren.com

JACOBS
STRUCTURAL
FACILITY 100
JOIST PROFILES
JOIST J100-4, J 100-5

3Kings WTP Phase III Design
Park City Municipal Corporation
Park City, Utah

VERIFY SCALE	BAR IS ONE INCH ON ORIGINAL DRAWING.
DATE	02/10/2020
PROJ	694342
DWG	100-S-5016
SHEET	416 of 911

ISSUED FOR CONSTRUCTION