



ENGINEERING CLARIFICATION

EC TITLE: Stone Veneer Base of Wall Details for Facilities
400, 500, 600, 700 and 800
PROJECT: 3 Kings Water Treatment Plant

EC NO.: 66
DATE: 9/10/2020
STATUS: Open

SECTION 1: BY CONTRACTOR

QUESTION:

PCMC seeks to avoid stone veneer below grade, therefore base of wall details need to be revised to avoid this condition.

DRAWING NO.:
SPECIFICATION SECTION:

POTENTIAL COST IMPACT:
POTENTIAL SCHEDULE IMPACT:

PROPOSED SOLUTION:

See attached revised details.

COMMENTS:

INITIATOR: Kirsten, Geoffrey/CVO

PRIORITY: Normal
REQUESTED RESPONSE DATE: 9/24/2020

SECTION 2: BY REVIEWER

RESPONSE:

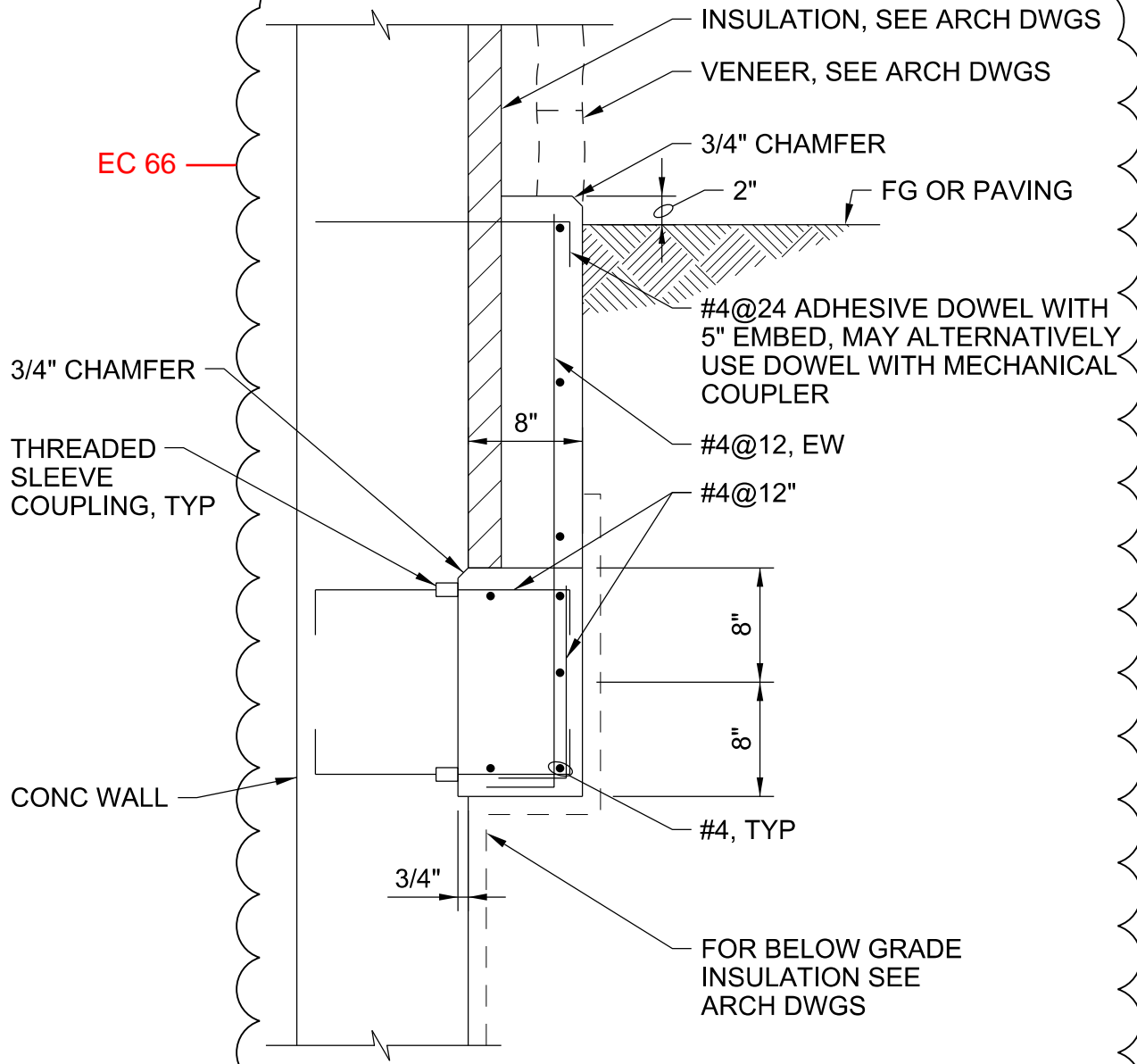
This EC response applies to Facilities 400, 500, 600, 700 and 800.

- 1) Attached Detail 0421-101 replaces the original contract document version and applies to facilities 500, 700 and 800.
- 2) Attached Detail 0421-102 replaces the original contract document version and applies to facility 800.
- 3) Attached Detail 0421-202 replaces the original contract document version and applies to facility 600.
- 4) Attached Detail 0421-203 is a new detail to replace detail 0421-102 at facility 400. It applies to conditions where grade is essentially at or below the finish floor elevation.
- 5) Attached Detail 0421-204 is a new detail to replace detail 0421-102 at facility 400. It applies to conditions where grade is higher than the finish floor elevation.

COMMENTS:

REVIEWED BY: Kirsten, Geoffrey/CVO

REVIEWED DATE: 9/10/2020



NOTE:
 FOR INFORMATION NOT SHOWN SEE DETAIL (0421-101)

VENEER SUPPORT SHELF

NTS

3Kings WTP Phase III Design
 Park City Municipal Corporation
 Park City, Utah

0330-150

ANCHORED NATURAL
STONE VENEER

1 1/2" MIN AIR SPACE

RIGID INSULATION (R-15)

ANCHOR TIE

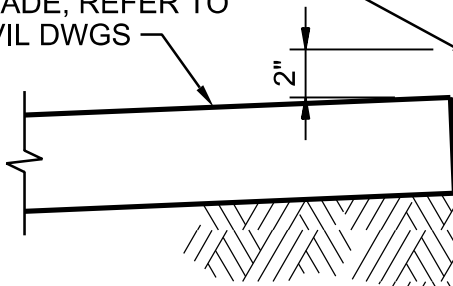
SELF-ADHERED
FLASHING LAPPED OVER
THROUGH-WALL FLASHING

THROUGH- WALL FLASHING

WEEP VENTS AT 24" OC

3/4" CHAMFER

PAVING OR FINISH
GRADE, REFER TO
CIVIL DWGS



CONCRETE SUPPORT
FOR STONE VENEER,
SLOPE TOP TO
MATCH GRADE

6" MIN
OVERLAP

RIGID
INSULATION (R-10)

WEEP TUBES (3/8"
DIA MIN) AT 24" SPACING
FOR DRAINAGE PATH
ABOVE WATERPROOFING

FLUID-APPLIED
WATERPROOFING AT
BELOW GRADE WALLS
OF HABITABLE SPACES

CMU OR CONC WALL,
REFER TO STRUCTURAL
DRAWINGS

FLUID-APPLIED AIR AND
WATER BARRIER LAPPED
OVER FLUID APPLIED
WATERPROOFING

CONCRETE
WALL OR CURB

SEALANT OVER PJF

CONCRETE
FLOOR SLAB

VARIES
SEE
STRUCT
DRAWINGS

UNDERSLAB VAPOR
RETARDER WHERE
OCCURS

CONCRETE FOUNDATION,
SEE STRUCTURAL
DRAWINGS

CONCRETE CORBEL
OR TOP OF FOOTING

BASE OF WALL

NTS

EC 66

0421-101

3Kings WTP Phase III Design
Park City Municipal Corporation
Park City, Utah

FLUID-APPLIED AIR AND WATER BARRIER LAPPED OVER FLUID-APPLIED WATERPROOFING

RIGID INSULATION (R-15)

1 1/2" MIN AIR SPACE

ANCHORED NATURAL STONE VENEER

SELF-ADHERED FLASHING LAPPED OVER THROUGH-WALL FLASHING

ANCHOR TIE

THROUGH-WALL FLASHING

WEEP VENTS AT 24" OC

3/4" CHAMFER

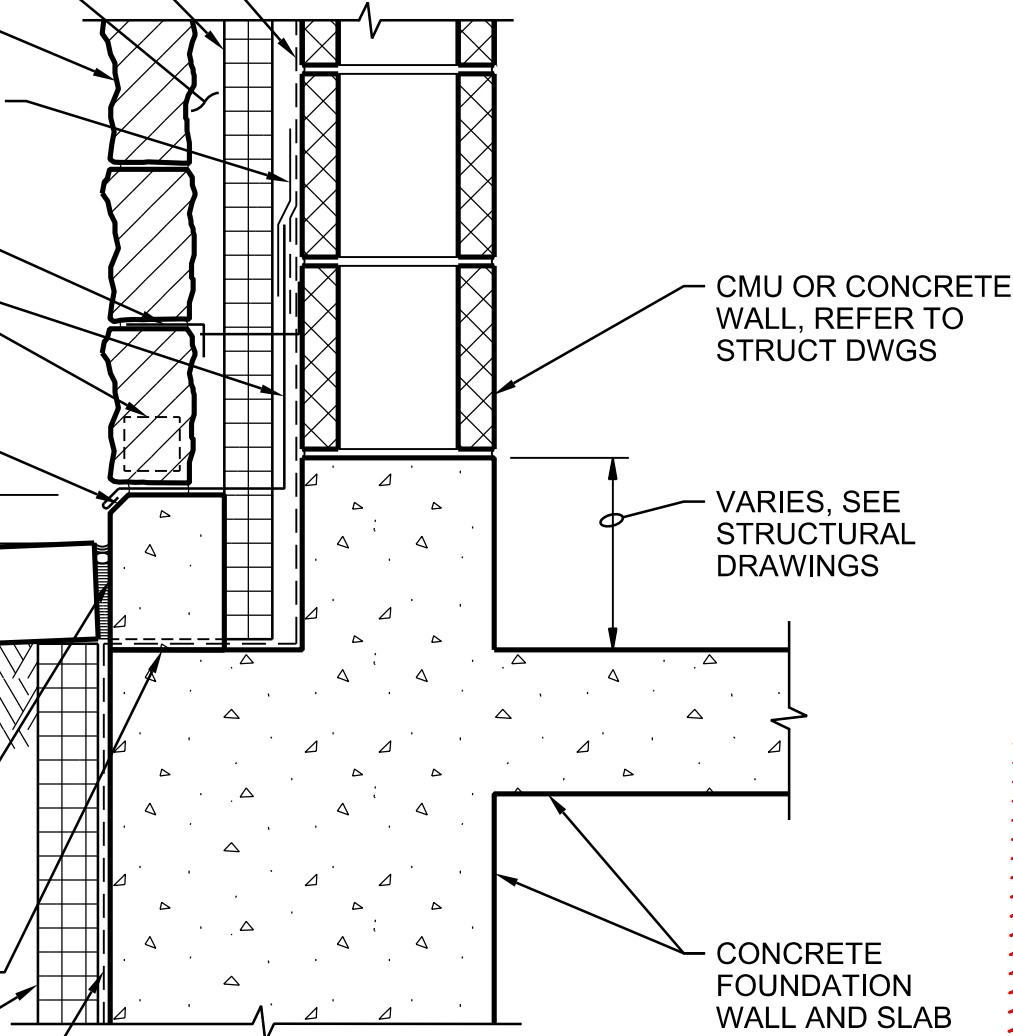
PAVING OR FINISH GRADE, REFER TO CIVIL DWGS

CONCRETE SUPPORT FOR STONE VENEER, SLOPE TOP TO MATCH GRADE, NOTE 1

WEEP TUBES (3/8" DIA MIN) AT 24" SPACING FOR DRAINAGE PATH ABOVE WATERPROOFING

RIGID (PERIMETER) INSULATION (R-10)

FLUID-APPLIED WATERPROOFING AT BELOW GRADE WALLS OF HABITABLE SPACE

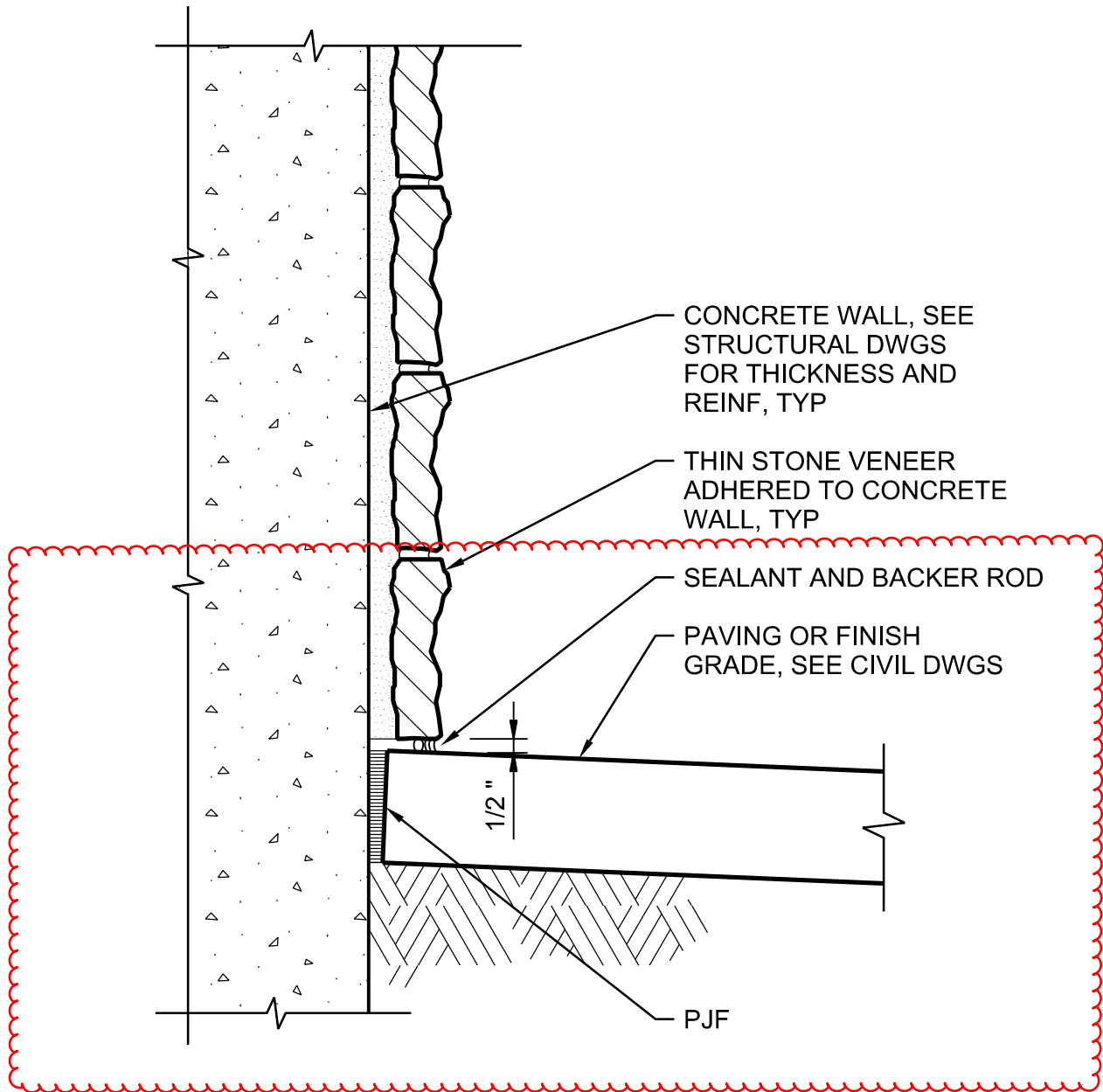


BASE OF WALL

NTS

NOTES:

1. WHERE THE HEIGHT OF THE CONCRETE SUPPORT CURB IS LESS THAN 18", CONSTRUCT THE CURB IN ACCORDANCE WITH DETAIL 0330-080. WHERE THE HEIGHT IS OVER 18", CONSTRUCT IN ACCORDANCE WITH DETAIL 0330-150 SIM.



EC 66

BASE OF WALL

NTS

3Kings WTP Phase III Design
Park City Municipal Corporation
Park City, Utah

0421-202

FLUID-APPLIED AIR AND WATER BARRIER

RIGID INSULATION (R-15)

1 1/2" MIN AIR SPACE

ANCHORED NATURAL STONE VENEER

ANCHOR TIE

SELF-ADHERED FLASHING LAPPED OVER THROUGH-WALL FLASHING

THROUGH-WALL FLASHING

WEEP VENTS AT 24" OC

3/4" CHAMFER

SEALANT OVER PJF

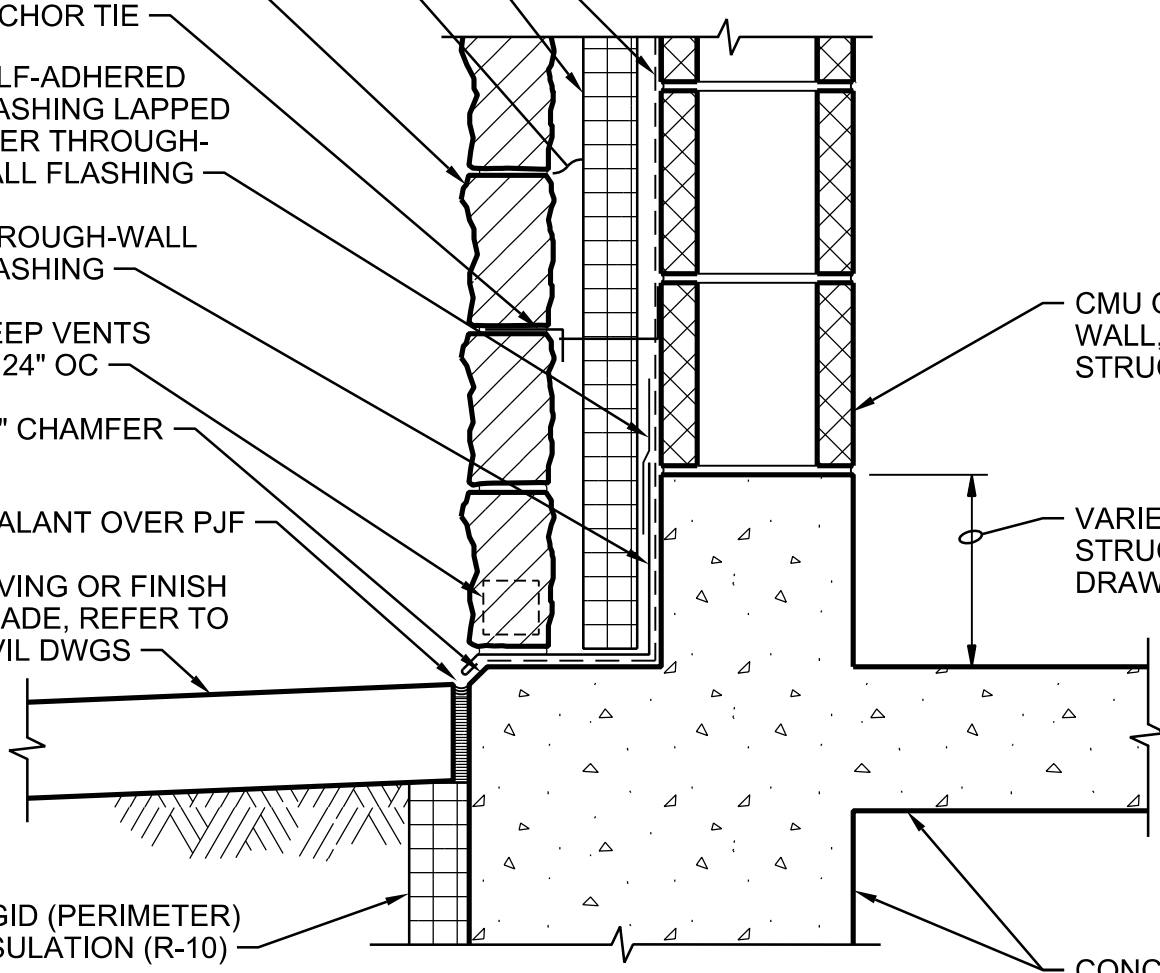
PAVING OR FINISH GRADE, REFER TO CIVIL DWGS

RIGID (PERIMETER) INSULATION (R-10)

CMU OR CONCRETE WALL, REFER TO STRUCT DWGS

VARIES, SEE STRUCTURAL DRAWINGS

CONCRETE FOUNDATION WALL AND SLAB



BASE OF WALL

NTS

EC 66

3Kings WTP Phase III Design
Park City Municipal Corporation
Park City, Utah

0421-203

FLUID-APPLIED AIR AND WATER BARRIER

RIGID INSULATION (R-15)

1 1/2" MIN AIR SPACE

ANCHORED NATURAL STONE VENEER

SELF-ADHERED FLASHING LAPPED OVER THROUGH-WALL FLASHING

ANCHOR TIE

THROUGH-WALL FLASHING

WEEP VENTS AT 24" OC

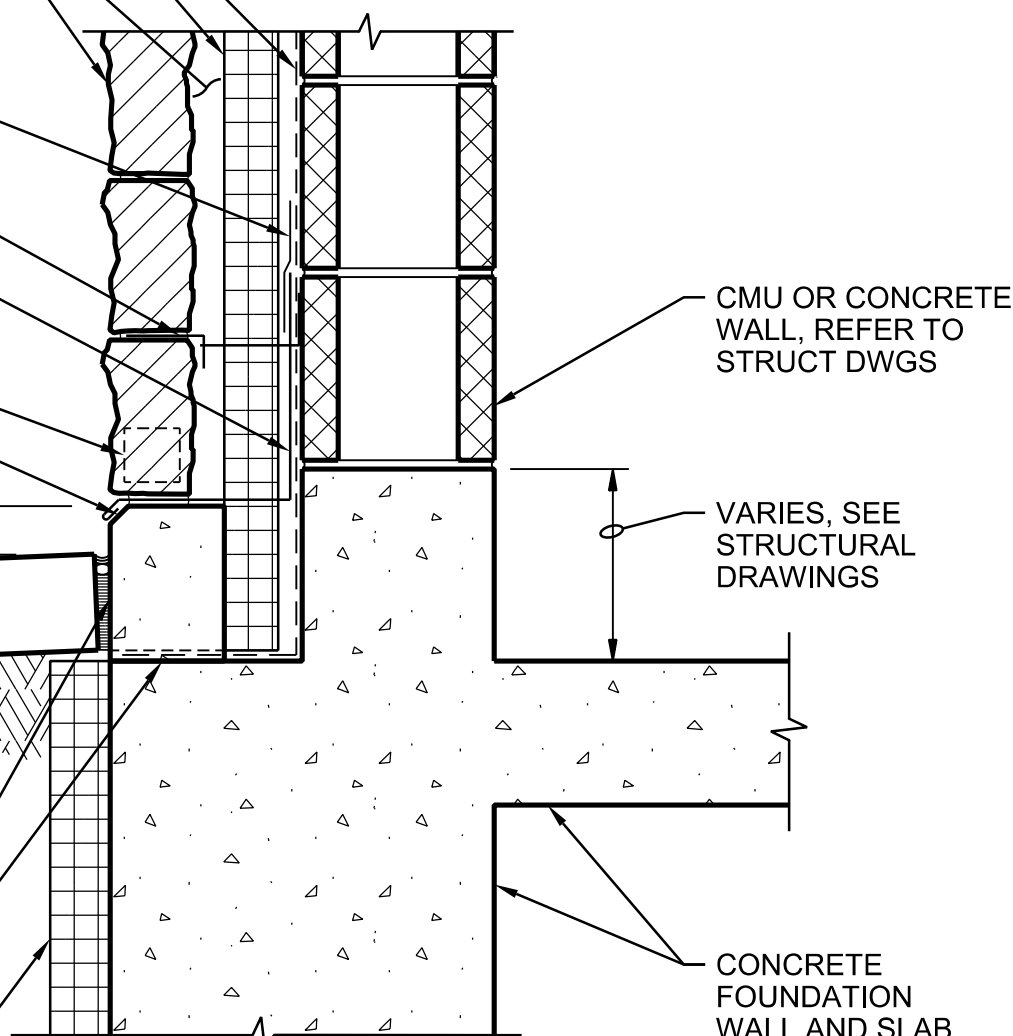
3/4" CHAMFER

PAVING OR FINISH GRADE, REFER TO CIVIL DRAWINGS

CONCRETE SUPPORT FOR STONE VENEER, SLOPE TOP TO MATCH GRADE, NOTE 1

WEEP TUBES (3/8" DIA MIN) AT 24" SPACING FOR DRAINAGE PATH ABOVE AIR AND WATER BARRIER

RIGID (PERIMETER) INSULATION (R-10)



CMU OR CONCRETE WALL, REFER TO STRUCT DWGS

VARIES, SEE STRUCTURAL DRAWINGS

CONCRETE FOUNDATION WALL AND SLAB

NOTES:

- 1. WHERE THE HEIGHT OF THE CONCRETE SUPPORT CURB IS LESS THAN 18", CONSTRUCT THE CURB IN ACCORDANCE WITH DETAIL 0330-080. WHERE THE HEIGHT IS OVER 18", CONSTRUCT IN ACCORDANCE WITH DETAIL 0330-150 SIM.

BASE OF WALL

NTS

EC 66