



## ENGINEERING CLARIFICATION

---

**EC TITLE:** Pond Outlet Structure  
**PROJECT:** 3 Kings Water Treatment Plant

**EC NO.:** 95  
**DATE:** 1/13/2021  
**STATUS:** Open

### SECTION 1: BY CONTRACTOR

**QUESTION:**

To be consistent with precast submittal, the concrete pond outlet structure design was updated.

**DRAWING NO.:** 051-CG-7003 SITE CIVIL - GRADING AND DRAINAGE DETAILS GENERAL

**POTENTIAL COST IMPACT:**

**SPECIFICATION SECTION:**

**POTENTIAL SCHEDULE IMPACT:**

**PROPOSED SOLUTION:**

See revised drawing.

**COMMENTS:**

**INITIATOR:** Erik Neperud

**PRIORITY:** Normal

**REQUESTED RESPONSE DATE:** 1/27/2021

### SECTION 2: BY REVIEWER

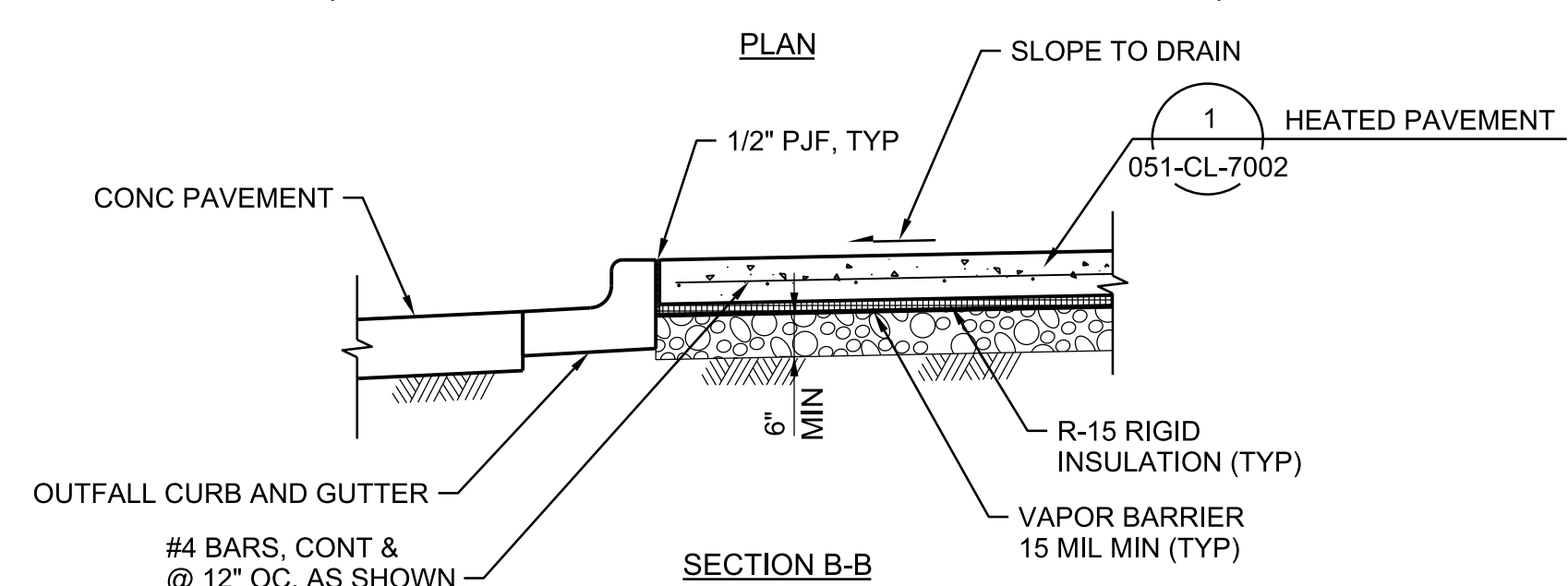
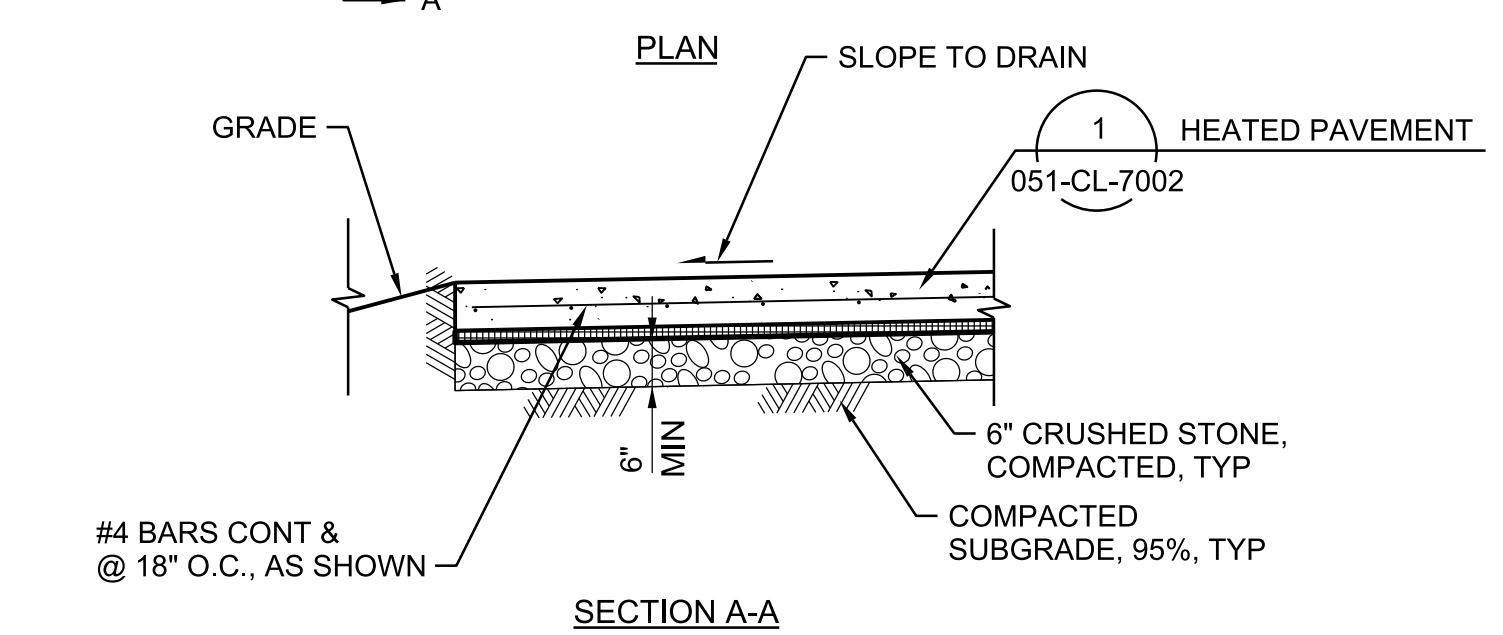
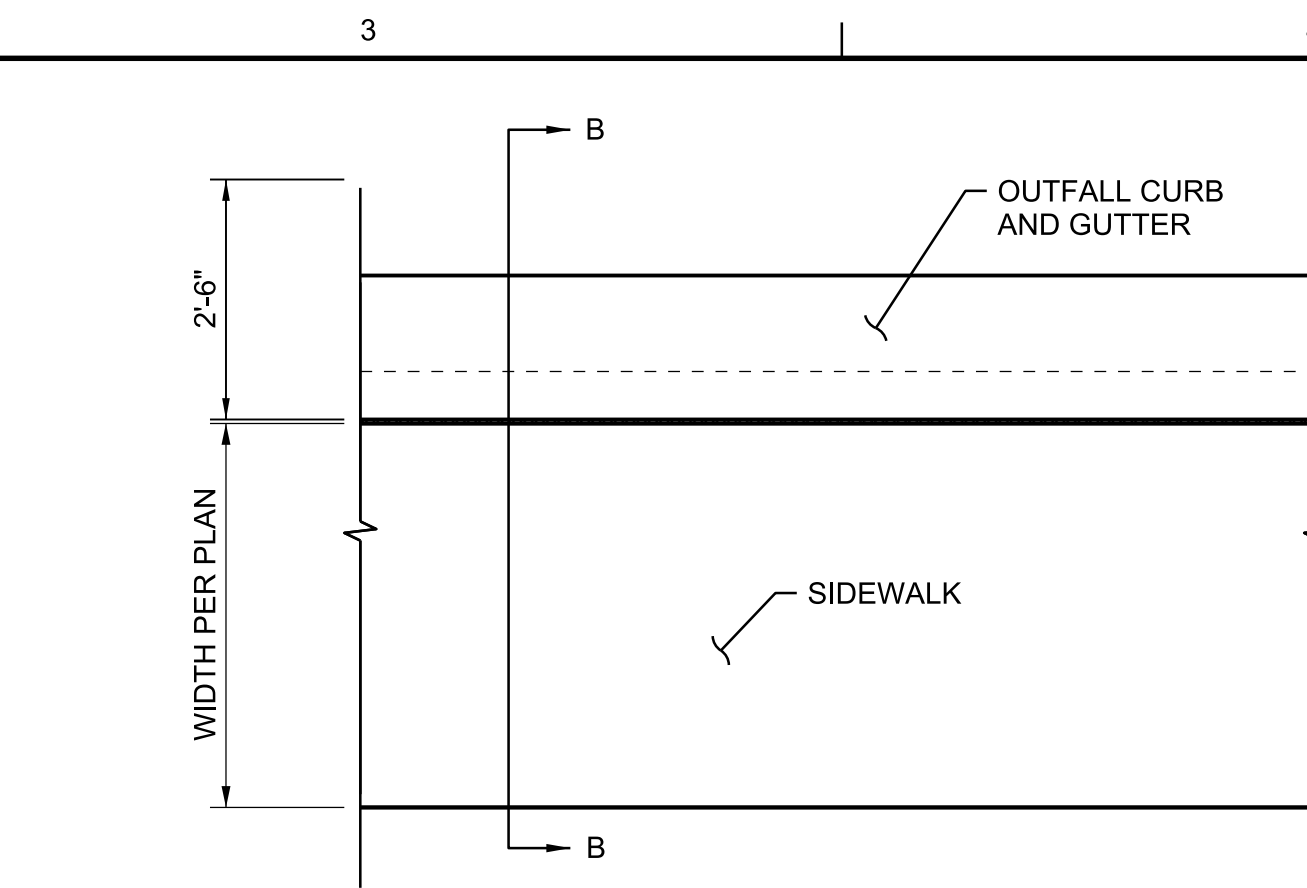
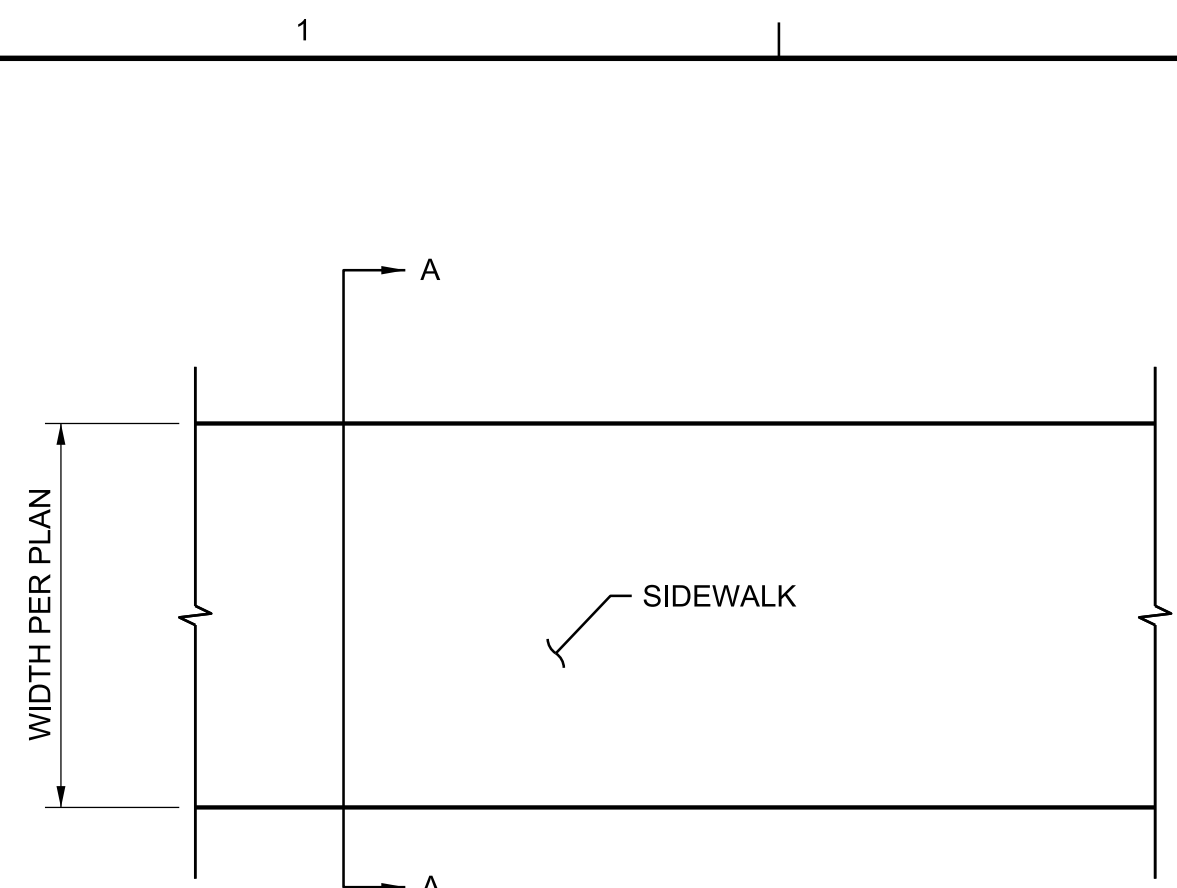
**RESPONSE:**

Pond outlet structure detail is revised to be consistent with the precast product availability and submittal.

**COMMENTS:**

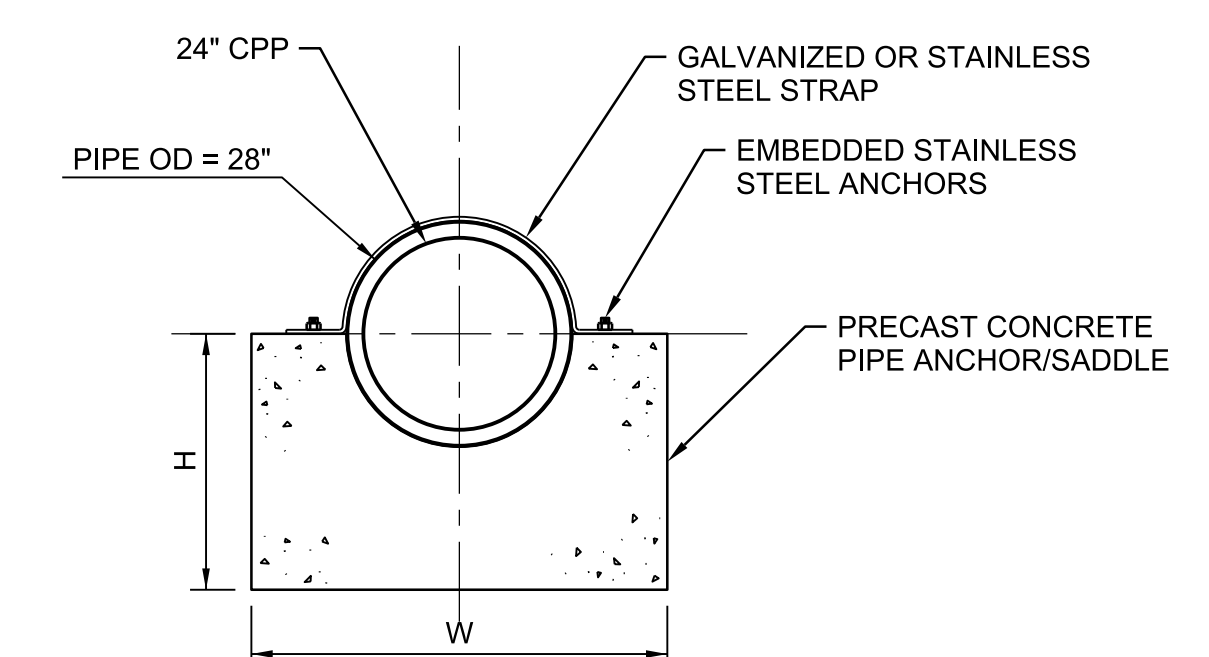
**REVIEWED BY:** Erik Neperud

**REVIEWED DATE:** 1/13/2021



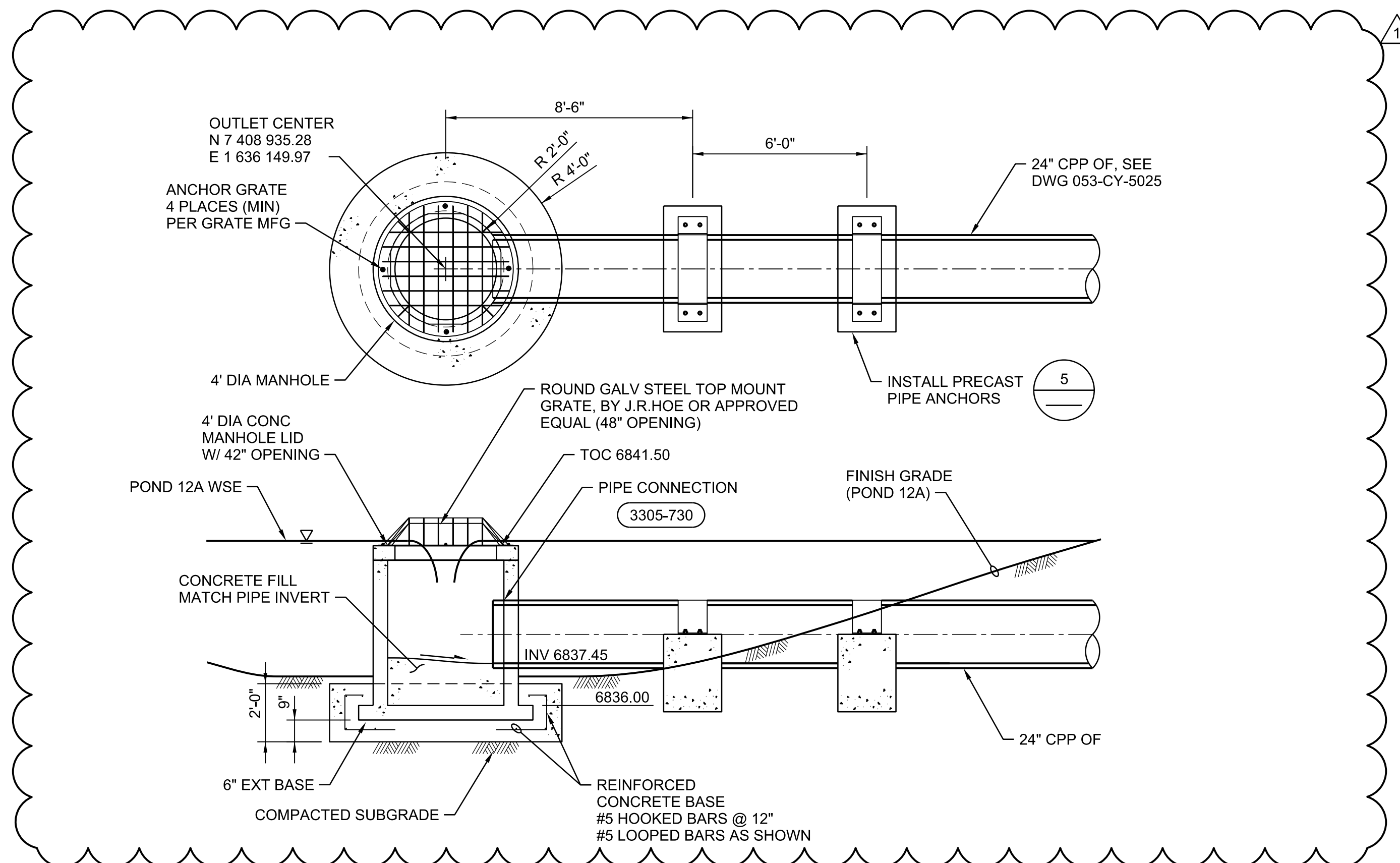
NOTES:  
1. REINFORCEMENT SHALL MAINTAIN ADEQUATE COVER PER STEEL REINFORCEMENT SPECIFICATION, SECTION 03 21 00. REINFORCEMENT SHALL NOT BE CONTINUOUS THROUGH EXPANSION JOINTS IN SIDEWALKS AND CURBS.

**3 HEATED SIDEWALK SECTION**  
NTS  
051-CG-3002



- NOTES:
1. PRECAST DIMENSIONS (WIDTH, LENGTH, HEIGHT) VARY BASE ON MANUFACTURER. MINIMUM WEIGHT OF EACH PRECAST UNIT MUST BE AT LEAST 4,000 LBS.
  2. STRAP SHALL BE SNUG AGAINST CORRUGATED PLASTIC PIPE TO PREVENT MOVEMENT DUE TO BUANCY FORCES.
  3. STRAPS SHALL BE GALVANIZED OR STAINLESS STEEL AND ANCHOR BOLTS SHALL BE STAINLESS STEEL, EMBEDDED OR EPOXYED INTO THE CONCRETE. EXPANSION ANCHORS MAY NOT BE USED.
  4. IF STRAP IS NOT TIGHT AGAINST PIPE WHEN BOLTED INTO PLACE, INSTALL PROTECTIVE PADDING OF BUTYL RUBBER OR HDPE.

**5 PRECAST PIPE ANCHOR**  
NTS



**4 POND OUTLET STRUCTURE**  
NTS  
051-CG-3003  
053-CY-2001

**ZEHREN AND ASSOCIATES, INC.**  
LANDSCAPE ARCHITECTURE  
1000 North 1000 West, Suite 200  
P.O. Box 1910, American Fork, Utah 84603  
801-764-4227 FAX 801-764-1500

**JACOBS**  
SITE CIVIL  
GRADING AND DRAINAGE  
DETAILS  
GENERAL

3Kings WTP Phase III Design  
Park City Municipal Corporation  
Park City, Utah

VERIFY SCALE	
BAR IS ONE INCH ON ORIGINAL DRAWING.	
DATE	02/10/2020
PROJ	694342
DWG	051-CG-7003
SHEET	75 of 911

ISSUED FOR CONSTRUCTION  
RE/USE OF DOCUMENTS: THIS DOCUMENT, AND THE IDEAS AND DESIGNS INCORPORATED HEREIN, AS AN INSTRUMENT OF PROFESSIONAL SERVICE, IS THE PROPERTY OF JACOBS AND IS NOT TO BE USED, IN WHOLE OR IN PART, FOR ANY OTHER PROJECT WITHOUT THE WRITTEN AUTHORIZATION OF JACOBS. © JACOBS 2018. ALL RIGHTS RESERVED.