



ENGINEERING CLARIFICATION

EC TITLE: Facility 310 REC Piping Adjustments
PROJECT: 3 Kings Water Treatment Plant

EC NO.: 103
DATE: 4/20/2021
STATUS: Open

SECTION 1: BY CONTRACTOR

QUESTION:

This EC provides adjustments to the REC piping in Facility 310 in response to RFI 175. This RFI requests the piping be moved higher in order to create wall space for the VFD enclosure.

DRAWING NO.: 310-D-2002 PROCESS MECHANICAL -
FACILITY 300 - AREA 310 - BACKWASH WASTE AND
CLARIFICATION EQUALIZATION ENLARGED PLAN

SPECIFICATION SECTION:

POTENTIAL COST IMPACT:

POTENTIAL SCHEDULE IMPACT:

PROPOSED SOLUTION:

See attached drawing revisions.

COMMENTS:

INITIATOR: Menk, Sean/SLC

PRIORITY: Normal

REQUESTED RESPONSE DATE: 5/4/2021

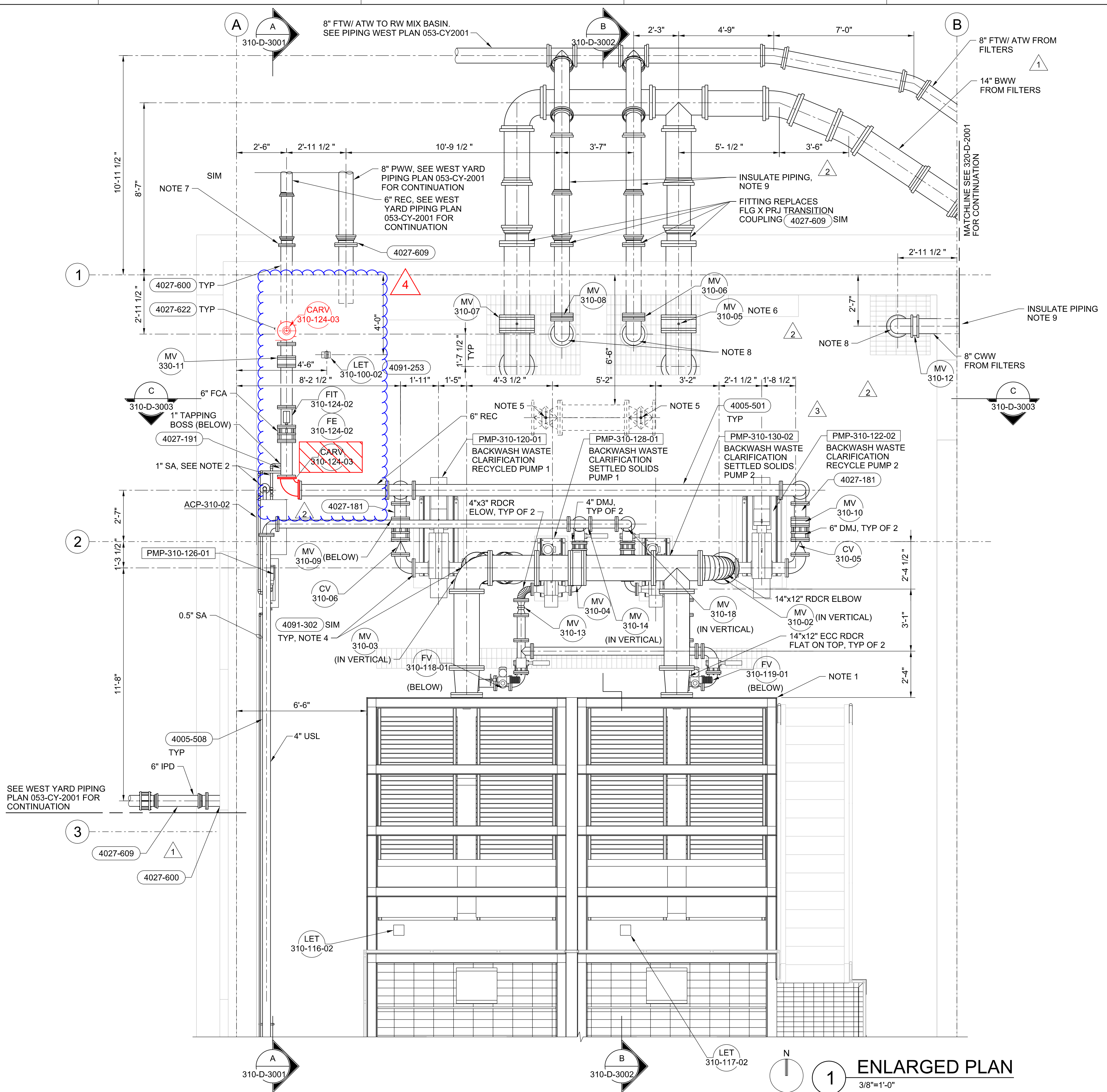
SECTION 2: BY REVIEWER

RESPONSE:

COMMENTS:

REVIEWED BY:

REVIEWED DATE:



- ### GENERAL NOTES
- SEE SPECIFICATION SECTION 44 44 59 FOR BACKWASH WASTE CLARIFICATION SYSTEM REQUIREMENTS.
 - CONNECT 1" SA TO 6" REC WITH TAPPING BOSS.
 - DRAIN LINE SHALL BE 1.5"
 - INSTALL PRESSURE ELEMENT, SWITCH, INDICATOR PER PID 060-N-31004 FOR SETTLED SOLIDS PUMPS AND 060-N-31003 FOR RECYCLE PUMPS.
 - INSTALL VALVE OPERATOR WITH FLOOR BOX PER 4027-201 TYPE A, TYPICAL OF 2.
 - INSTALL VALVE OPERATOR WITH NUT PER 4027-201 TYPE B, TYPICAL OF 2.
 - TRANSITION PIPE MATERIAL TO PVC WHERE SHOWN ON YARD PIPING DRAWINGS.
 - AIR GAP PIPING TO TERMINATE 18-INCHES CLEAR BETWEEN BOTTOM FLANGE AND FINISHED FLOOR. INSTALL A NO. 4 MESH 316 SST SCREEN BETWEEN FLANGES.
 - INSULATE PIPING FROM BUILDING UNTIL 7-FT OF COVER IS ACHIEVED OVER PIPING FOR FINAL SITE GRADING CONDITIONS. USE PCMC STD PLAN 546 FOR PIPE INSULATION DETAIL (SIM).

PROFESSIONAL ENGINEER
 No. 11427110
 SEAN TYLER MENK
 STATE OF UTAH
 DIGITALLY SIGNED: 10/26/2020

NO.	DATE	DESCRIPTION	BY	APPROVED
4	04/19/2021	ENGINEERING CLARIFICATION #103	JZ	SM
3	10/22/2020	ENGINEERING CLARIFICATION #71	JZ	SM
2	08/25/2020	ENGINEERING CLARIFICATION #44	JZ	SM
1	03/31/2020	ENGINEERING CLARIFICATION #8	JZ	SM

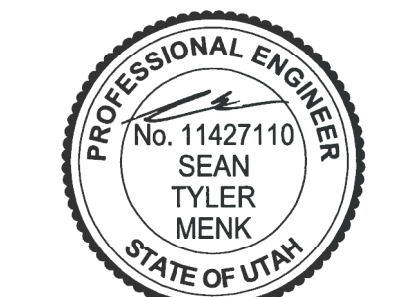
JACOBS
 PROCESS MECHANICAL
 FACILITY 300 - AREA 310
 BACKWASH WASTE AND CLARIFICATION
 EQUALIZATION ENLARGED PLAN
 ISSUED FOR CONSTRUCTION

DATE	02/10/2020
PROJ	694342
DWG	310-D-2002
SHEET	621 of 911

ENLARGED PLAN
 3/8"=1'-0"
 1

GENERAL NOTES

1. EXTEND DRAIN LINES WITHIN 24" OF FINISHED FLOOR.
2. PIPE AIR RELEASE VALVE DRAIN WITHIN 24" OF FINISHED FLOOR.
3. INSTALL VALVE OPERATOR WITH FLOOR BOX PER 4027-201 TYPE A.
4. INSTALL VALVE OPERATOR WITH NUT PER 4027-201 TYPE B.
5. HARD PIPE ACP DRAIN TO FLOOR PIPE WITH 2" SCH 80 PVC.



DIGITALLY SIGNED: 10/26/2020

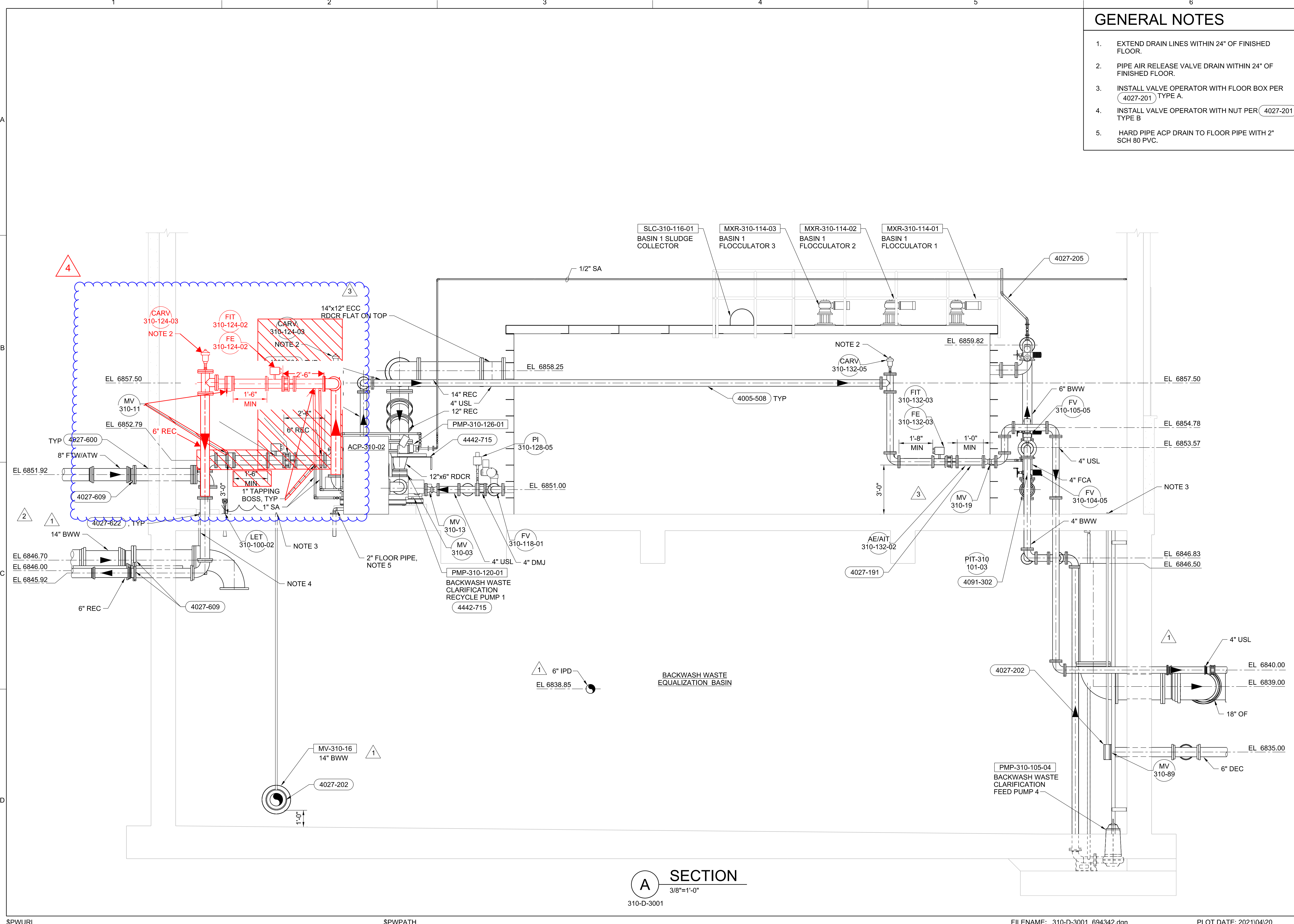
NO.	DATE	DESCRIPTION	BY	APPROVED
4	04/19/2021	ENGINEERING CLARIFICATION #103	JZ	SM
3	10/22/2020	ENGINEERING CLARIFICATION #71	JZ	SM
2	08/25/2020	ENGINEERING CLARIFICATION #44	JZ	SM
1	03/31/2020	ENGINEERING CLARIFICATION #8	JZ	SM

ZEHREN AND ASSOCIATES, INC.
ARCHITECTURE, PLANNING, INTERIORS
LANDSCAPE ARCHITECTURE
1414 West 10th Street, Suite 200
Salt Lake City, Utah 84119
801.462.2277 FAX: 801.462.1100

JACOBS
PROCESS MECHANICAL
3Kings WTP Phase III Design
Park City Municipal Corporation
Park City, Utah

BACKWASH WASTE AND CLARIFICATION EQUALIZATION SECTION

DATE	02/10/2020
PROJ	694342
DWG	310-D-3001
SHEET	623 of 911



SECTION
3/8"=1'-0"
310-D-3001

ISSUED FOR CONSTRUCTION