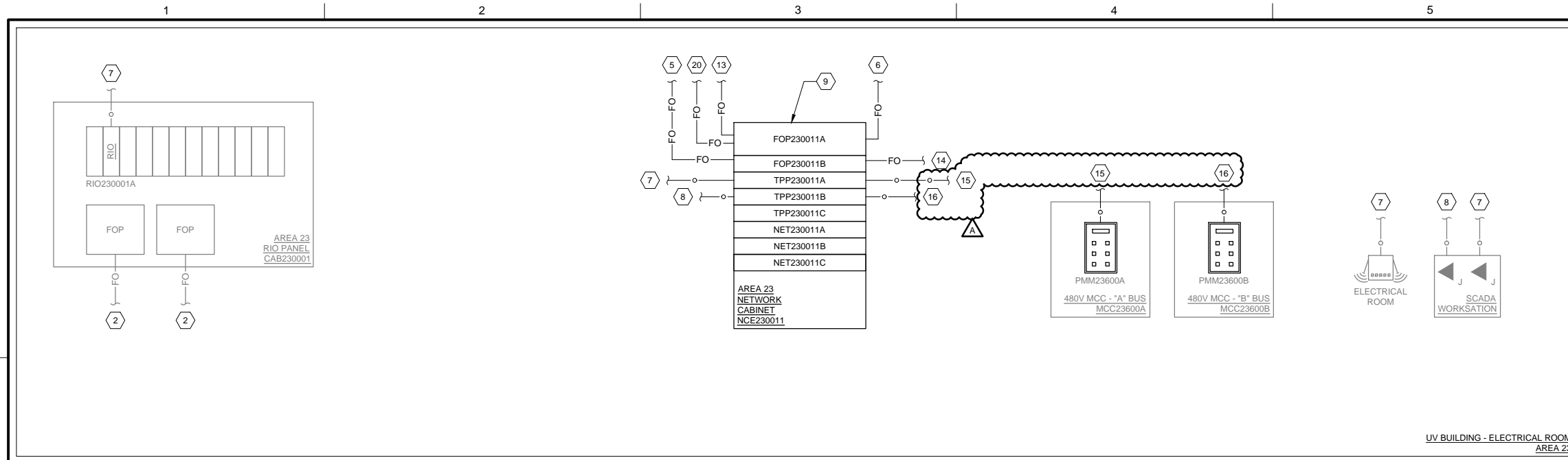
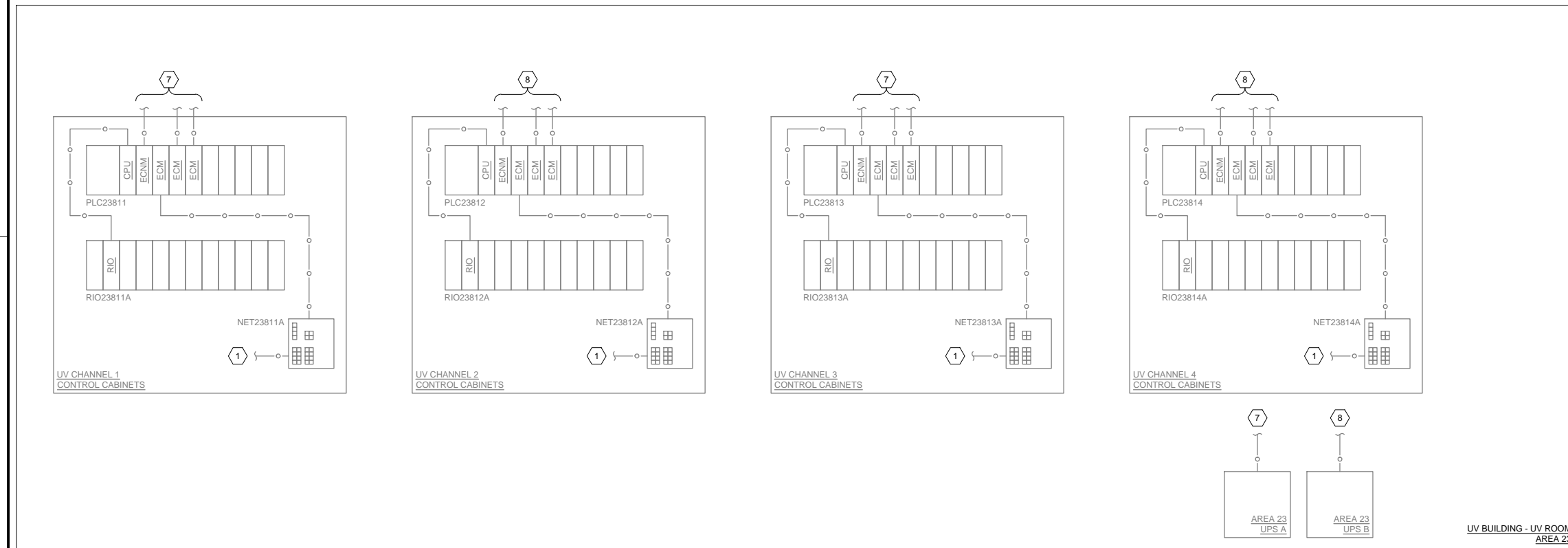


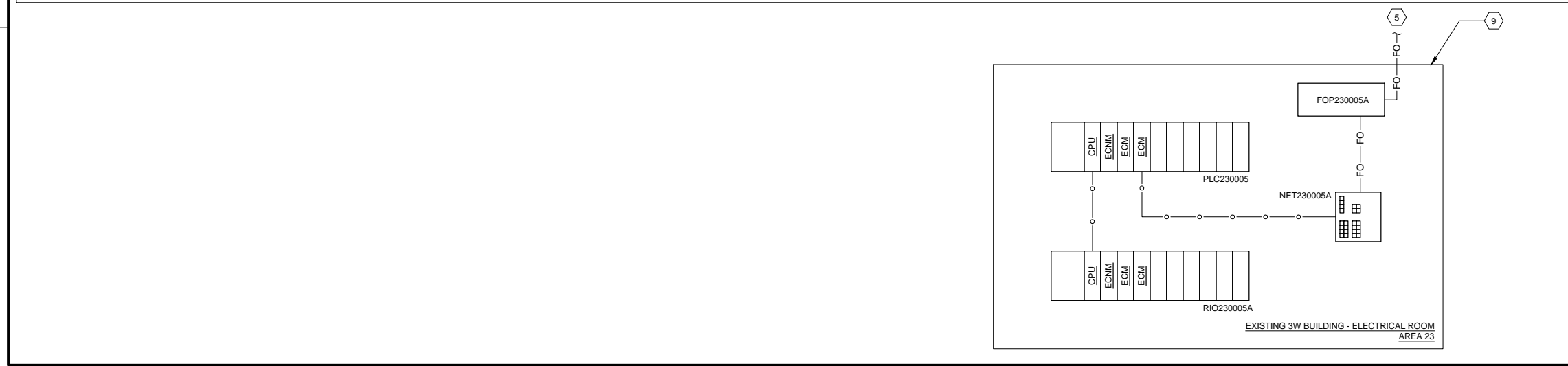
Path: \\BCS\IN\PROJECTS\CENTRAL\_VALLEY\15160600-BIM\03-AUTOCAD\03-UV FILTER PROJECT\_V18PID.DWG FILENAME: I-23-6102.DWG PLOT DATE: 2/21/2020 7:57 AM CAD USER: KEN WESTERBERG



UV BUILDING - ELECTRICAL ROOM  
AREA 23



UV BUILDING - UV ROOM  
AREA 23



**GENERAL NOTES:**

- CONTRACTOR SHALL PROVIDE, TERMINATE, AND TEST ALL NEW CATEGORY AND FIBER-OPTIC CABLES.
- PATCHING BETWEEN AREA NETWORK CABINET TWISTED PAIR PATCH PANELS (TPP) AND NETWORK SWITCHES PROVIDED BY OWNER. PATCHING BETWEEN AREA NETWORK CABINET NETWORK SWITCH FIBER-OPTIC UPLINK PORTS AND FIBER-OPTIC PATCH PANELS (FOP) PROVIDED BY OWNER.
- PROVIDE CATEGORY CABLE AS FOLLOWS, UNLESS OTHERWISE NOTED:
  - UNSHIELDED CAT 6: PATCHING CONNECTIONS WITHIN PLC PANELS
  - SHIELDED CAT 6: CABLES ENTERING OR LEAVING 480 VAC EQUIPMENT (ATS, MCC, SWITCHGEAR, ETC.).
  - JACKET COLOR SHALL BE BLUE.
- ALL FIBER-OPTIC CABLES SHALL BE INSTALLED IN INNERDUCT.
- EXISTING EQUIPMENT AND COMMUNICATIONS CABLES ARE DEPICTED WITH LIGHTER WEIGHT LINE WORK. THIS DRAWING DOES NOT SHOW ALL EXISTING EQUIPMENT AND COMMUNICATIONS CABLES INCLUDED IN THE EXISTING AREA 23 ETHERNET NETWORKS. PRIOR TO BEGINNING WORK, CONTRACTOR SHALL FIELD VERIFY EXISTING EQUIPMENT AND COMMUNICATIONS CABLES DEPICTED ON THIS DRAWING AND BRING ANY DISCREPANCIES TO THE ATTENTION OF THE OWNER'S REPRESENTATIVE.
- FOR CABLING REFER TO CABLE SCHEDULE AND ELECTRICAL PLAN DRAWINGS.
- THIS DRAWING IS ISSUED IN MULTIPLE CONTRACTS. SEE NOTES BELOW FOR SCOPE DELINEATION.

**KEYNOTES (GENERAL):**

- EXISTING COMMUNICATIONS CABLE TO NETWORK CABINET IN 3W / FILTERS BUILDING. REFER TO I-02-6101.
- EXISTING 24-FIBER, MULTI-MODE CABLE TO EXISTING NETWORK CABINET IN EAST RAS/WAS PUMP STATION (AREA 21) ELECTRICAL ROOM. SEE DRAWING I-21-6101 FOR CONTINUATION.

**KEYNOTES (CC5F):**

- 12-FIBER, MULTI-MODE CABLE TO NCE020011 IN UTILITY WATER FILTRATION BUILDING (AREA 02) ELECTRICAL ROOM. SEE DRAWING I-02-6101 FOR CONTINUATION.
- 24-FIBER, SINGLE-MODE CABLE TO NETWORK CABINET IN UTILITY WATER FILTRATION BUILDING (AREA 02) ELECTRICAL ROOM. SEE DRAWING I-02-6101 FOR CONTINUATION.
- COMMUNICATIONS CABLE FROM EQUIPMENT NETWORK INTERFACE TO STP PATCH PANEL TPP230011A IN AREA NETWORK CABINET.
- COMMUNICATIONS CABLE FROM EQUIPMENT NETWORK INTERFACE TO STP PATCH PANEL TPP230011B IN AREA NETWORK CABINET.
- INSTALL AS PART OF 3W IMPROVEMENT CONSTRUCTION PROJECT CC 05F.

**KEYNOTES (CC30A):**

- 48-FIBER, SINGLE-MODE CABLE TO POWER GENERATION BUILDING (AREA 33) CONTROL ROOM. SEE DRAWING I-33-6101 FOR CONTINUATION.
- 12-FIBER, MULTI-MODE CABLE TO EXISTING NETWORK CABINET IN POWER GENERATION BUILDING (AREA 33) CONTROL ROOM. SEE DRAWING I-33-6102 FOR CONTINUATION.
- COMMUNICATIONS CABLE FROM EQUIPMENT NETWORK INTERFACE TO STP PATCH PANEL TPP230011A IN AREA NETWORK CABINET.
- COMMUNICATIONS CABLE FROM EQUIPMENT NETWORK INTERFACE TO STP PATCH PANEL TPP230011B IN AREA NETWORK CABINET.

**KEYNOTES (CC30B):**

- 48-FIBER, SINGLE-MODE CABLE TO EAST RAS/WAS PUMP STATION (AREA 21) ELECTRICAL ROOM. SEE DRAWING I-21-6101 FOR CONTINUATION.

**LEGEND:**

- CATEGORY CABLE. SEE SECTION 26 05 19.
- FO— FIBER-OPTIC CABLE, TYPE AND QUANTITY AS SPECIFIED IN NOTES



Brown and Caldwell  
6975 Union Park Center  
Salt Lake City, UT

BID ISSUE



NUTRIENT  
REMOVAL CC30A  
BLOWER BUILDING

**REVISIONS**

REV	DATE	DESCRIPTION
A	02/21/20	CC30A ADDENDUM 2

LINE IS 2 INCHES AT FULL SIZE

DESIGNED: J. JACKSON  
 DRAWN: S. MCBRIDE  
 CHECKED: L. LUBKE  
 CHECKED:  
 APPROVED: J. COX

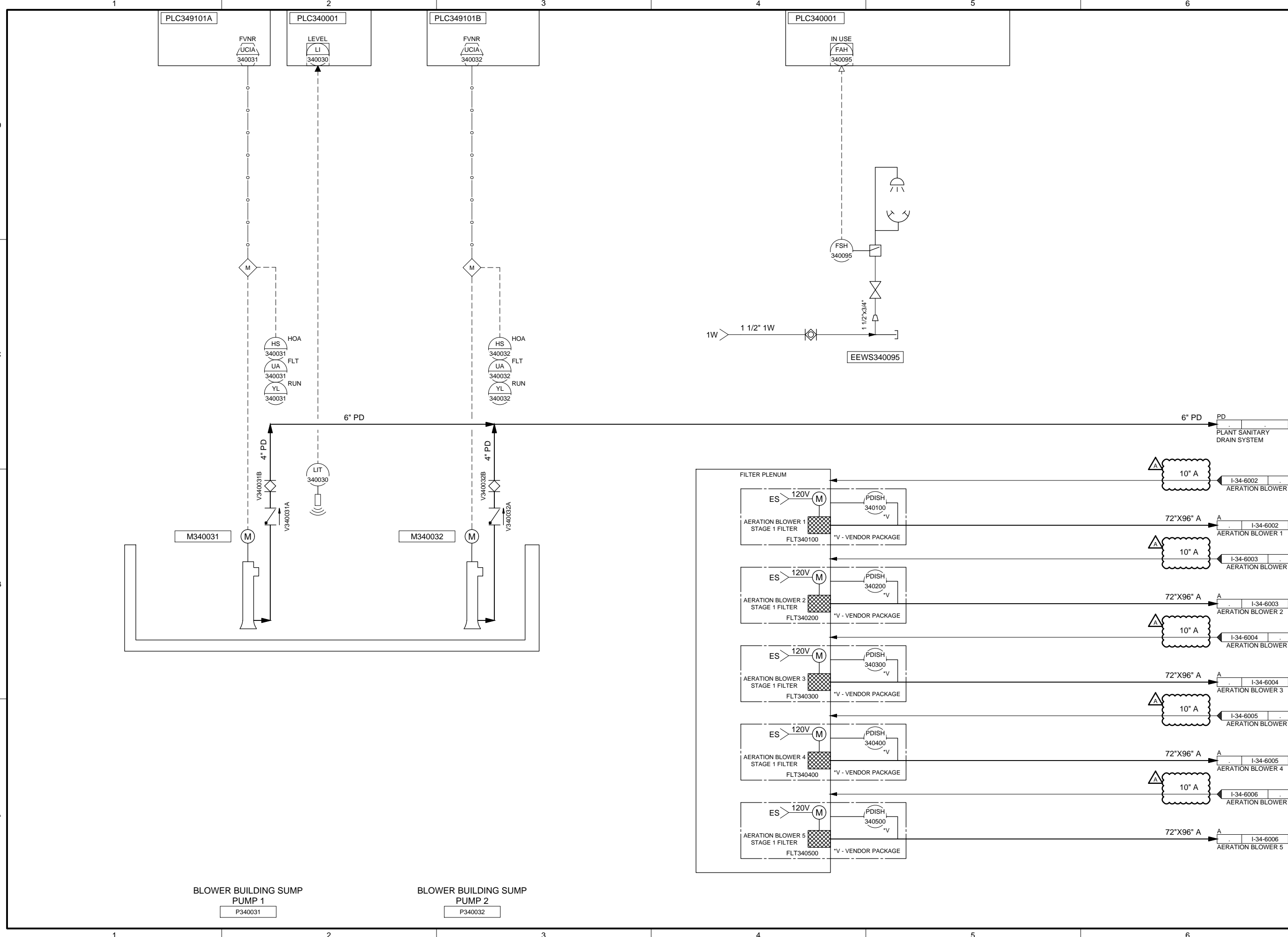
FILENAME  
I-23-6102.DWG  
 BC PROJECT NUMBER  
151600  
 CLIENT PROJECT NUMBER  
CC30A

**INSTRUMENTATION**

AREA 23 NETWORK  
DIAGRAM

DRAWING NUMBER  
**I-23-6101**

Path: \\BCS\IN\PROJECTS\CENTRAL VALLEY\15160000\BIM\03-AUTOCAD\03-PID\15160000-BIM\03-CENTRAL VALLEY NUTRIENTS-V17\710.DWG FILENAME: I-34-6001.DWG CAD USER: KEN WESTERBERG PLOT DATE: 2/21/2020 7:50 AM



6975 Union Park Center  
Salt Lake City, UT

BID ISSUE



### NUTRIENT REMOVAL CC30A BLOWER BUILDING

#### REVISIONS

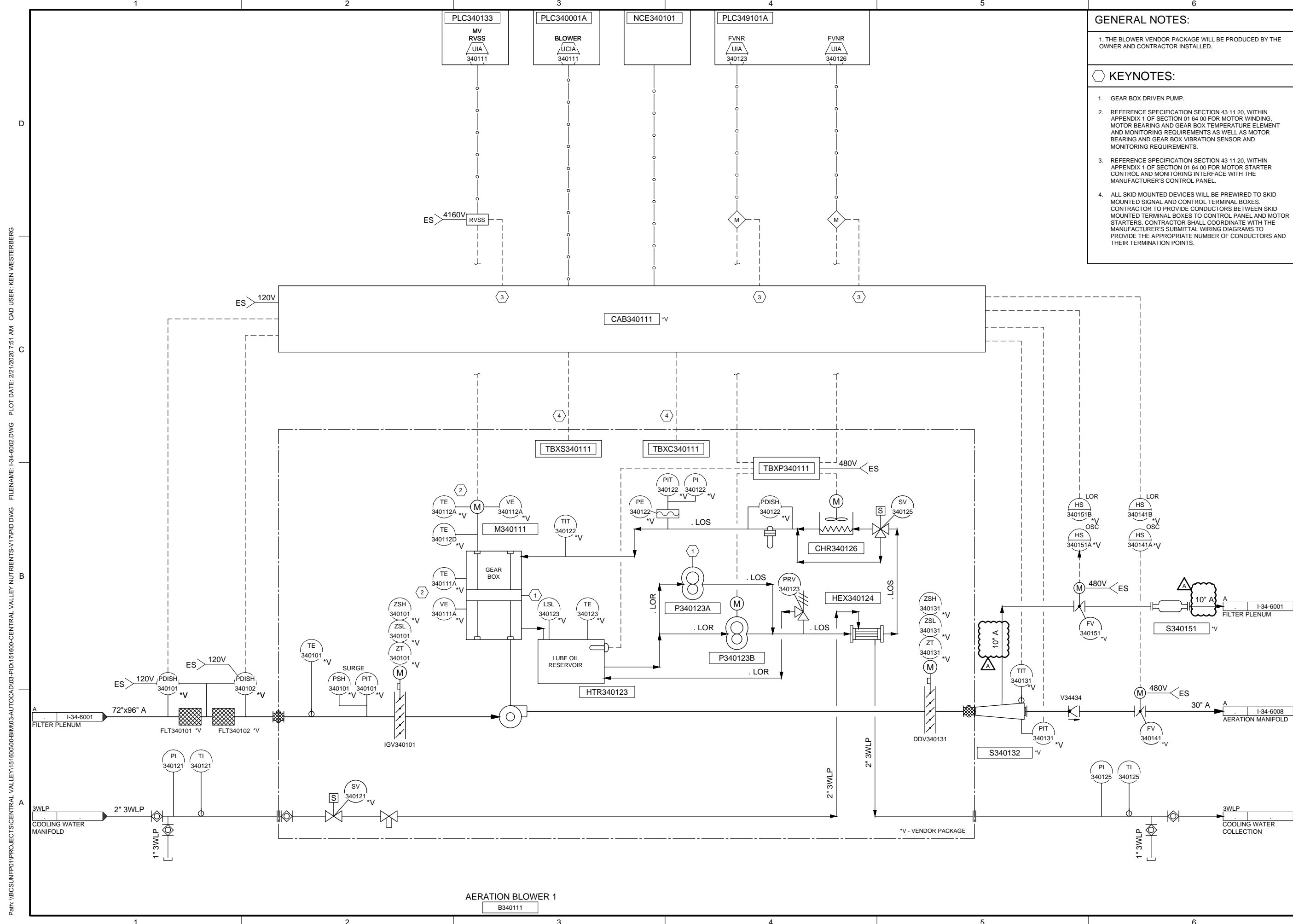
REV	DATE	DESCRIPTION
A	02/21/20	CC30A ADDENDUM 2

DESIGNED: K. SEE  
DRAWN: S. MCBRIDE  
CHECKED: L. LUBKE  
APPROVED: N. KUNZ

FILENAME: I-34-6001.DWG  
BC PROJECT NUMBER: 151600  
CLIENT PROJECT NUMBER: CC30A

#### INSTRUMENTATION AERATION BLOWER AIR INTAKE FILTER PLENUM

DRAWING NUMBER  
**I-34-6001**



**GENERAL NOTES:**

1. THE BLOWER VENDOR PACKAGE WILL BE PRODUCED BY THE OWNER AND CONTRACTOR INSTALLED.

**KEYNOTES:**

1. GEAR BOX DRIVEN PUMP.
2. REFERENCE SPECIFICATION SECTION 43 11 20, WITHIN APPENDIX 1 OF SECTION 01 64 00 FOR MOTOR WINDING, MOTOR BEARING AND GEAR BOX TEMPERATURE ELEMENT AND MONITORING REQUIREMENTS AS WELL AS MOTOR BEARING AND GEAR BOX VIBRATION SENSOR AND MONITORING REQUIREMENTS.
3. REFERENCE SPECIFICATION SECTION 43 11 20, WITHIN APPENDIX 1 OF SECTION 01 64 00 FOR MOTOR STARTER CONTROL AND MONITORING INTERFACE WITH THE MANUFACTURER'S CONTROL PANEL.
4. ALL SKID MOUNTED DEVICES WILL BE PREWIRED TO SKID MOUNTED SIGNAL AND CONTROL TERMINAL BOXES. CONTRACTOR TO PROVIDE CONDUCTORS BETWEEN SKID MOUNTED TERMINAL BOXES TO CONTROL PANEL AND MOTOR STARTERS. CONTRACTOR SHALL COORDINATE WITH THE MANUFACTURER'S SUBMITTAL WIRING DIAGRAMS TO PROVIDE THE APPROPRIATE NUMBER OF CONDUCTORS AND THEIR TERMINATION POINTS.



6975 Union Park Center  
Salt Lake City, UT

BID ISSUE



**NUTRIENT REMOVAL CC30A BLOWER BUILDING**

**REVISIONS**

REV	DATE	DESCRIPTION
A	02/21/20	CC30A ADDENDUM 2

LINE IS 2 INCHES AT FULL SIZE

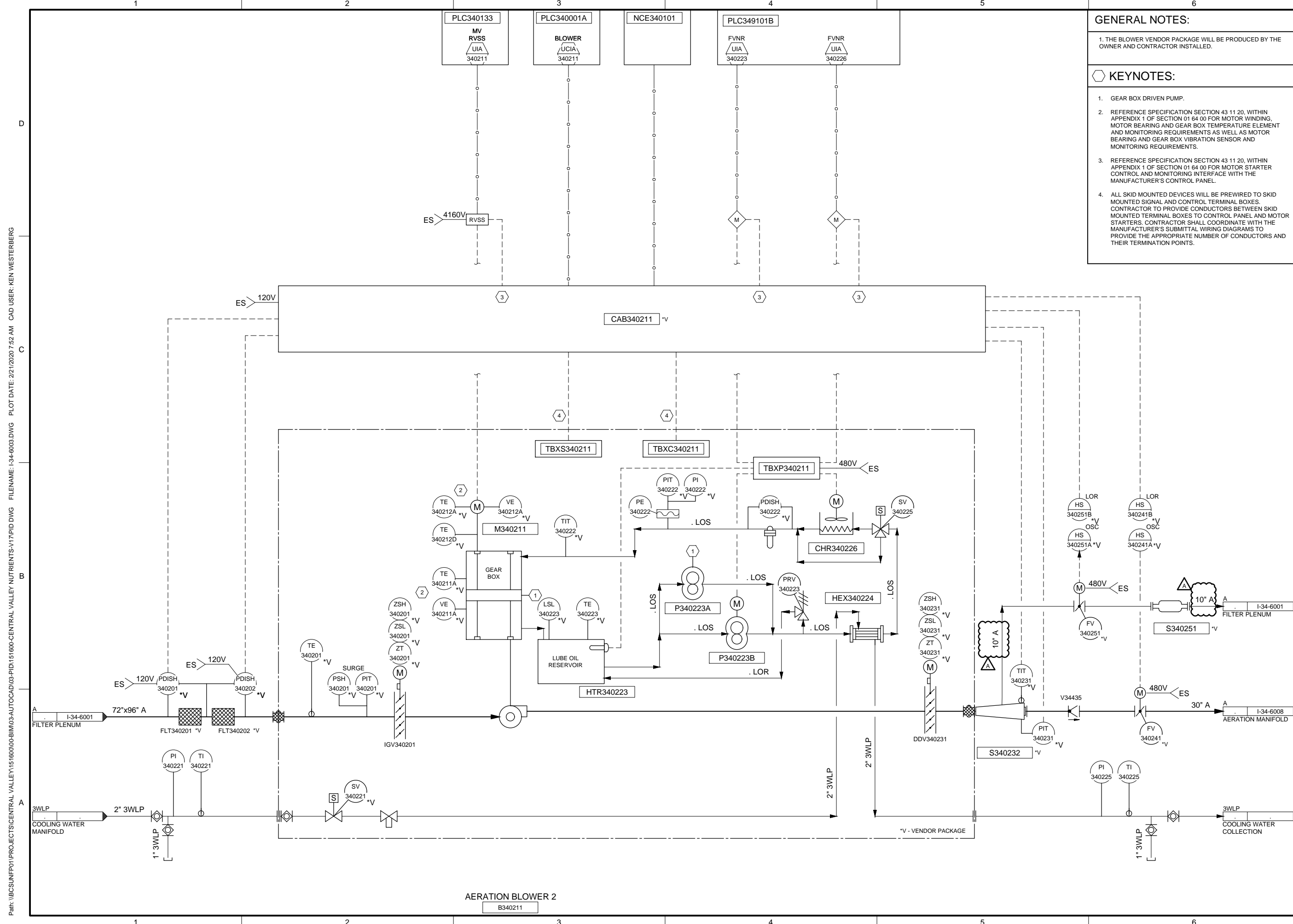
DESIGNED: K. SEE  
DRAWN: S. MCBRIDE  
CHECKED: L. LUBKE  
CHECKED:  
APPROVED: N. KUNZ

FILENAME  
I-34-6002.DWG  
BC PROJECT NUMBER  
151600  
CLIENT PROJECT NUMBER  
CC30A

**INSTRUMENTATION AERATION BLOWER 1**

DRAWING NUMBER  
**I-34-6002**

Path: \\BCS\INFP01\PROJECTS\CENTRAL VALLEY\151600\06-BIM\03-AUTOCAD\03-PID\151600-CENTRAL VALLEY NUTRIENTS-V17\PID.DWG FILENAME: I-34-6002.DWG PLOT DATE: 2/21/2020 7:51 AM CAD USER: KEN WESTERBERG



**GENERAL NOTES:**

1. THE BLOWER VENDOR PACKAGE WILL BE PRODUCED BY THE OWNER AND CONTRACTOR INSTALLED.

**KEYNOTES:**

1. GEAR BOX DRIVEN PUMP.
2. REFERENCE SPECIFICATION SECTION 43 11 20, WITHIN APPENDIX 1 OF SECTION 01 64 00 FOR MOTOR WINDING, MOTOR BEARING AND GEAR BOX TEMPERATURE ELEMENT AND MONITORING REQUIREMENTS AS WELL AS MOTOR BEARING AND GEAR BOX VIBRATION SENSOR AND MONITORING REQUIREMENTS.
3. REFERENCE SPECIFICATION SECTION 43 11 20, WITHIN APPENDIX 1 OF SECTION 01 64 00 FOR MOTOR STARTER CONTROL AND MONITORING INTERFACE WITH THE MANUFACTURER'S CONTROL PANEL.
4. ALL SKID MOUNTED DEVICES WILL BE PREWIRED TO SKID MOUNTED SIGNAL AND CONTROL TERMINAL BOXES. CONTRACTOR TO PROVIDE CONDUCTORS BETWEEN SKID MOUNTED TERMINAL BOXES TO CONTROL PANEL AND MOTOR STARTERS. CONTRACTOR SHALL COORDINATE WITH THE MANUFACTURER'S SUBMITTAL WIRING DIAGRAMS TO PROVIDE THE APPROPRIATE NUMBER OF CONDUCTORS AND THEIR TERMINATION POINTS.



6975 Union Park Center  
Salt Lake City, UT

BID ISSUE



**NUTRIENT REMOVAL CC30A BLOWER BUILDING**

**REVISIONS**

REV	DATE	DESCRIPTION
A	02/21/20	CC30A ADDENDUM 2

LINE IS 2 INCHES AT FULL SIZE

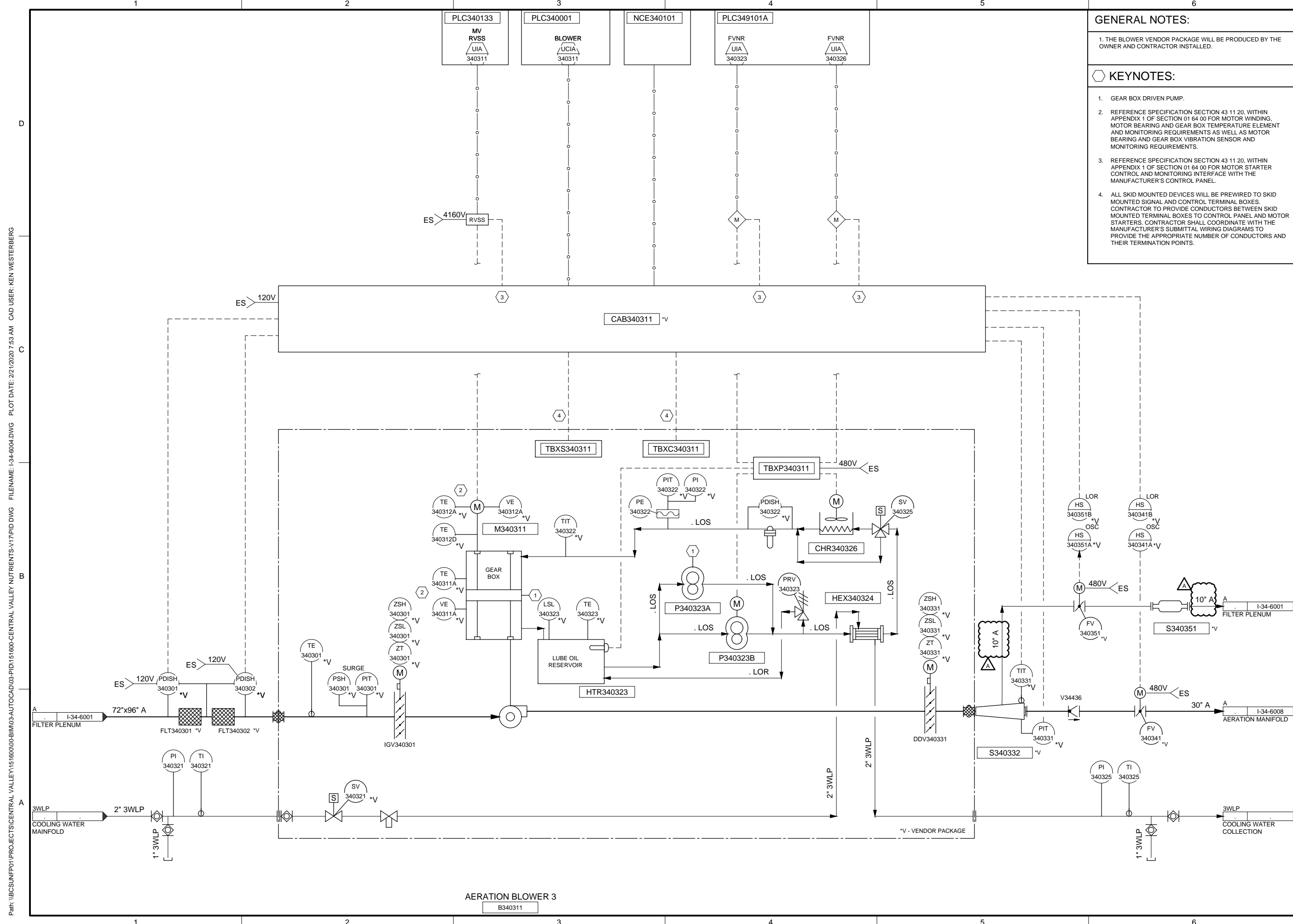
DESIGNED: K. SEE  
DRAWN: S. MCBRIDE  
CHECKED: L. LUBKE  
CHECKED:  
APPROVED: N. KUNZ

FILENAME  
I-34-6003.DWG  
BC PROJECT NUMBER  
151600  
CLIENT PROJECT NUMBER  
CC30A

**INSTRUMENTATION  
AERATION BLOWER 2**

DRAWING NUMBER  
**I-34-6003**

Path: \\BCS\INFP01\PROJECTS\CENTRAL VALLEY\151600\06-BIM\03-AUTOCAD\03-PID\151600-CENTRAL VALLEY NUTRIENTS-V17\FID.DWG FILENAME: I-34-6003.DWG PLOT DATE: 2/21/2020 7:52 AM CAD USER: KEN WESTERBERG



**GENERAL NOTES:**

1. THE BLOWER VENDOR PACKAGE WILL BE PRODUCED BY THE OWNER AND CONTRACTOR INSTALLED.

**KEYNOTES:**

1. GEAR BOX DRIVEN PUMP.
2. REFERENCE SPECIFICATION SECTION 43 11 20, WITHIN APPENDIX 1 OF SECTION 01 64 00 FOR MOTOR WINDING, MOTOR BEARING AND GEAR BOX TEMPERATURE ELEMENT AND MONITORING REQUIREMENTS AS WELL AS MOTOR BEARING AND GEAR BOX VIBRATION SENSOR AND MONITORING REQUIREMENTS.
3. REFERENCE SPECIFICATION SECTION 43 11 20, WITHIN APPENDIX 1 OF SECTION 01 64 00 FOR MOTOR STARTER CONTROL AND MONITORING INTERFACE WITH THE MANUFACTURER'S CONTROL PANEL.
4. ALL SKID MOUNTED DEVICES WILL BE PREWIRED TO SKID MOUNTED SIGNAL AND CONTROL TERMINAL BOXES. CONTRACTOR TO PROVIDE CONDUCTORS BETWEEN SKID MOUNTED TERMINAL BOXES TO CONTROL PANEL AND MOTOR STARTERS. CONTRACTOR SHALL COORDINATE WITH THE MANUFACTURER'S SUBMITTAL WIRING DIAGRAMS TO PROVIDE THE APPROPRIATE NUMBER OF CONDUCTORS AND THEIR TERMINATION POINTS.



6975 Union Park Center  
Salt Lake City, UT

BID ISSUE



**NUTRIENT REMOVAL CC30A BLOWER BUILDING**

**REVISIONS**

REV	DATE	DESCRIPTION
A	02/21/20	CC30A ADDENDUM 2

LINE IS 2 INCHES AT FULL SIZE

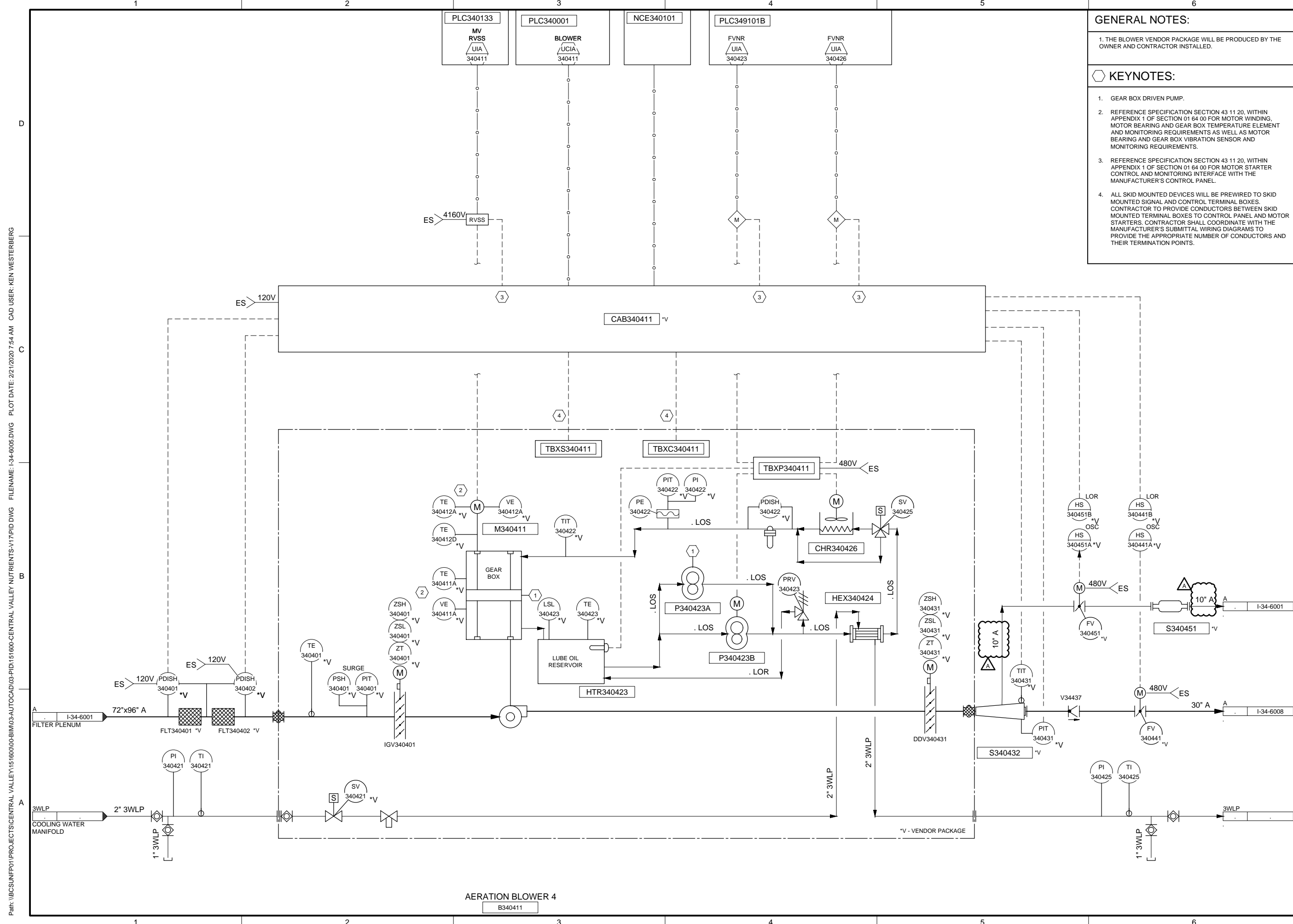
DESIGNED: K. SEE  
 DRAWN: S. MCBRIDE  
 CHECKED: L. LUBKE  
 CHECKED:  
 APPROVED: N. KUNZ

FILENAME: I-34-6004.DWG  
 BC PROJECT NUMBER: 151600  
 CLIENT PROJECT NUMBER: CC30A

**INSTRUMENTATION AERATION BLOWER 3**

DRAWING NUMBER  
**I-34-6004**

Path: \\BCS\INFP01\PROJECTS\CENTRAL VALLEY\151600\06-BIM\03-AUTOCAD\03-PID\151600-CENTRAL VALLEY NUTRIENTS-V17\FID.DWG FILENAME: I-34-6004.DWG PLOT DATE: 2/21/2020 7:53 AM CAD USER: KEN WESTERBERG



**GENERAL NOTES:**

1. THE BLOWER VENDOR PACKAGE WILL BE PRODUCED BY THE OWNER AND CONTRACTOR INSTALLED.

**KEYNOTES:**

1. GEAR BOX DRIVEN PUMP.
2. REFERENCE SPECIFICATION SECTION 43 11 20, WITHIN APPENDIX 1 OF SECTION 01 64 00 FOR MOTOR WINDING, MOTOR BEARING AND GEAR BOX TEMPERATURE ELEMENT AND MONITORING REQUIREMENTS AS WELL AS MOTOR BEARING AND GEAR BOX VIBRATION SENSOR AND MONITORING REQUIREMENTS.
3. REFERENCE SPECIFICATION SECTION 43 11 20, WITHIN APPENDIX 1 OF SECTION 01 64 00 FOR MOTOR STARTER CONTROL AND MONITORING INTERFACE WITH THE MANUFACTURER'S CONTROL PANEL.
4. ALL SKID MOUNTED DEVICES WILL BE PREWIRED TO SKID MOUNTED SIGNAL AND CONTROL TERMINAL BOXES. CONTRACTOR TO PROVIDE CONDUCTORS BETWEEN SKID MOUNTED TERMINAL BOXES TO CONTROL PANEL AND MOTOR STARTERS. CONTRACTOR SHALL COORDINATE WITH THE MANUFACTURER'S SUBMITTAL WIRING DIAGRAMS TO PROVIDE THE APPROPRIATE NUMBER OF CONDUCTORS AND THEIR TERMINATION POINTS.



6975 Union Park Center  
Salt Lake City, UT

BID ISSUE



**NUTRIENT REMOVAL CC30A BLOWER BUILDING**

**REVISIONS**

REV	DATE	DESCRIPTION
A	02/21/20	CC30A ADDENDUM 2

LINE IS 2 INCHES AT FULL SIZE

DESIGNED: K. SEE  
DRAWN: S. MCBRIDE  
CHECKED: L. LUBKE  
CHECKED:  
APPROVED: N. KUNZ

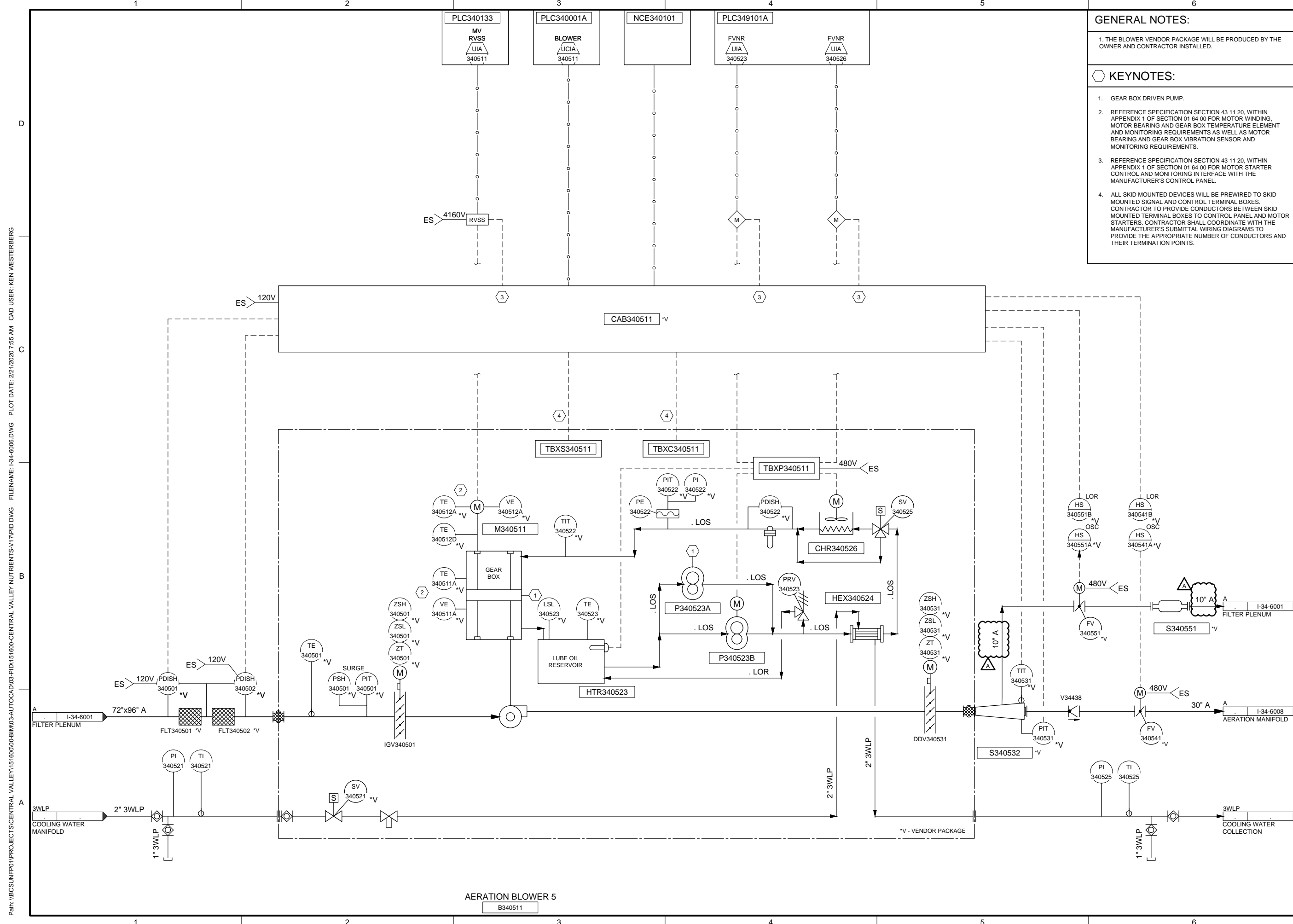
FILENAME: I-34-6005.DWG  
BC PROJECT NUMBER: 151600  
CLIENT PROJECT NUMBER: CC30A

**INSTRUMENTATION AERATION BLOWER 4**

DRAWING NUMBER  
**I-34-6005**

Path: \\BCS\IN\PROJ\CENTRAL VALLEY\151600\03-AUTOCAD\03-PID\151600-CENTRAL VALLEY NUTRIENTS-V17\PID.DWG FILENAME: I-34-6005.DWG PLOT DATE: 2/21/2020 7:54 AM CAD USER: KEN WESTERBERG





**GENERAL NOTES:**

1. THE BLOWER VENDOR PACKAGE WILL BE PRODUCED BY THE OWNER AND CONTRACTOR INSTALLED.

**KEYNOTES:**

1. GEAR BOX DRIVEN PUMP.
2. REFERENCE SPECIFICATION SECTION 43 11 20, WITHIN APPENDIX 1 OF SECTION 01 64 00 FOR MOTOR WINDING, MOTOR BEARING AND GEAR BOX TEMPERATURE ELEMENT AND MONITORING REQUIREMENTS AS WELL AS MOTOR BEARING AND GEAR BOX VIBRATION SENSOR AND MONITORING REQUIREMENTS.
3. REFERENCE SPECIFICATION SECTION 43 11 20, WITHIN APPENDIX 1 OF SECTION 01 64 00 FOR MOTOR STARTER CONTROL AND MONITORING INTERFACE WITH THE MANUFACTURER'S CONTROL PANEL.
4. ALL SKID MOUNTED DEVICES WILL BE PREWIRED TO SKID MOUNTED SIGNAL AND CONTROL TERMINAL BOXES. CONTRACTOR TO PROVIDE CONDUCTORS BETWEEN SKID MOUNTED TERMINAL BOXES TO CONTROL PANEL AND MOTOR STARTERS. CONTRACTOR SHALL COORDINATE WITH THE MANUFACTURER'S SUBMITTAL WIRING DIAGRAMS TO PROVIDE THE APPROPRIATE NUMBER OF CONDUCTORS AND THEIR TERMINATION POINTS.



6975 Union Park Center  
Salt Lake City, UT

BID ISSUE



**NUTRIENT REMOVAL CC30A BLOWER BUILDING**

**REVISIONS**

REV	DATE	DESCRIPTION
A	02/21/20	CC30A ADDENDUM 2

LINE IS 2 INCHES AT FULL SIZE

DESIGNED: J. JACKSON  
DRAWN: S. MCBRIDE  
CHECKED: L. LUBKE  
CHECKED:  
APPROVED: N. KUNZ

FILENAME: I-34-6006.DWG  
BC PROJECT NUMBER: 151600  
CLIENT PROJECT NUMBER: CC30A

**INSTRUMENTATION AERATION BLOWER 5**

DRAWING NUMBER  
**I-34-6006**

Path: \\BSCS\IN\PROJECTS\CENTRAL VALLEY\151600\06-BIM\03-AUTOCAD\03-PID\151600-CENTRAL VALLEY NUTRIENTS-V17\PID.DWG FILENAME: I-34-6006.DWG PLOT DATE: 2/21/2020 7:55 AM CAD USER: KEN WESTERBERG