

- KEYNOTES:**
- DUCTWORK TO RUN AS HIGH AS POSSIBLE. COORDINATE ROUTING WITH ALL TRADES.
 - HIGH EFFICIENCY TAKE-OFF (TYPICAL).
 - MANUAL BALANCING DAMPER.
 - HEATING/COOLING THERMOSTATE.
 - TURNING VANES (TYPICAL).
 - VFD FOR EXHAUST FAN EF348460.
 - VFD TO ROOF MOUNTED EXHAUST FAN EF348440.
 - VFD TO ROOF MOUNTED EXHAUST FAN EF348430.



6975 Union Park Center
Salt Lake City, UT



BID ISSUE



NUTRIENT REMOVAL CC30A BLOWER BUILDING

REVISIONS

REV	DATE	DESCRIPTION
A	3/3/20	CC30A Addendum 3

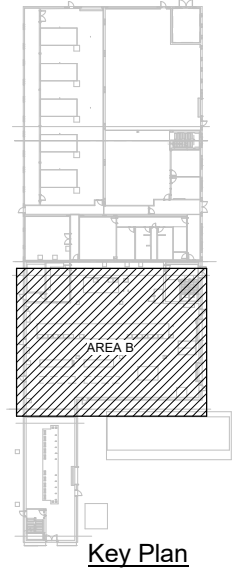
LINE IS 2 INCHES AT FULL SIZE

DESIGNED: J. BERRETT
DRAWN: B. SEARE
CHECKED: C. GREENWELL
APPROVED: J. BERRETT

FILENAME: 151600-M-34V18
BC PROJECT NUMBER: 151600
CLIENT PROJECT NUMBER: CC30A

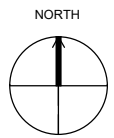
MECHANICAL BLOWER BUILDING GROUND LEVEL MECHANICAL PLAN AREA B

DRAWING NUMBER
M-34-1007



PLAN
SCALE: 3/16" = 1'-0"

Path: BIM_360/151600 - CVWRF Nutrients/151600-M-34V18.rvt
 Plot Date: 3/3/2020 4:32:26 PM



- KEYNOTES:**
- 1 DUCTWORK TO RUN AS HIGH AS POSSIBLE. COORDINATE ROUTING WITH ALL TRADES (TYPICAL).
 - 2 HIGH EFFICIENCY TAKE-OFF (TYPICAL).
 - 3 TURNING VANES (TYPICAL).
 - 4 HEATING/COOING THERMOSTAT.
 - 5 MANUAL BALANCING DAMPER.
 - 6 KEEP STUD CAVITY CLEAR. PROVIDE OPENING ABOVE CEILING MINIMUM 14.5"x3.5". SEE DETAIL 2/M-34-5004.
 - 7 OPENING IN WALL ABOVE CEILING.
 - 8 MOTORIZED DAMPER INTERLOCKED WITH FAN.
 - 9 VAV BOX SEE DETAIL 1/M-34-6002 & 3/M-34-5004
 - 10 4" DRYER VENT DOWN TO CLOTHES DRYER
 - 11 DUCT UP TO ABOVE.
 - 12 ALL RETURN DUCTWORK IN BLOWER RELIEF PLENUM TO BE WRAPPED WITH 3" INSULATION WITH FOIL FACED ALL-SERVICE JACKET (NO LINER).



6975 Union Park Center
Salt Lake City, UT



14 East 2750 South Salt Lake City, UT 84115
Phone: (801) 488-6648 Fax: (801) 487-2531

BID ISSUE



**NUTRIENT
REMOVAL CC30A
BLOWER BUILDING**

REVISIONS

REV	DATE	DESCRIPTION
A	3/3/20	CC30A Addendum 3

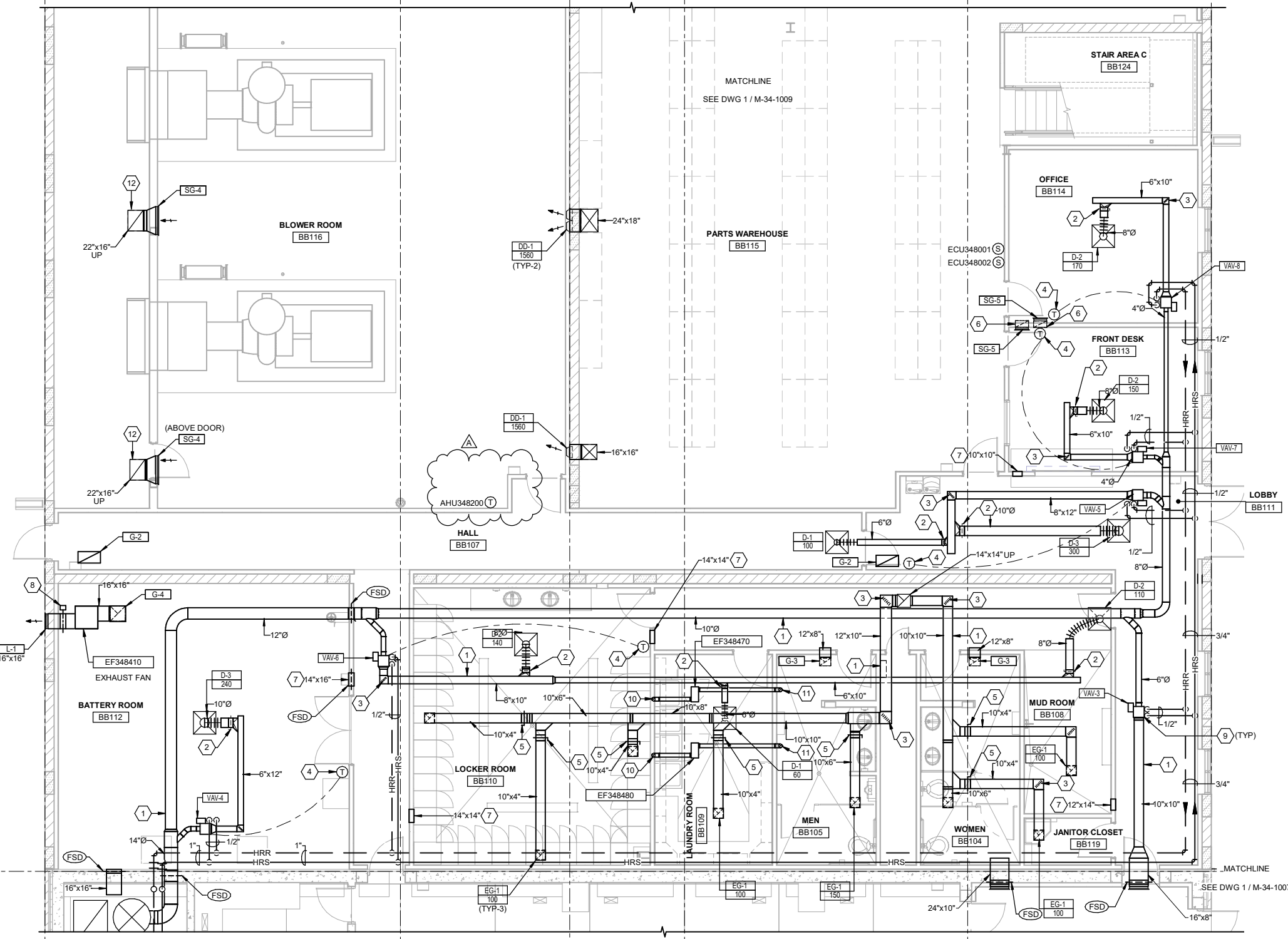
LINE IS 2 INCHES
AT FULL SIZE

DESIGNED: J. BERRETT
DRAWN: B. SEARE
CHECKED: C. GREENWELL
APPROVED: J. BERRETT

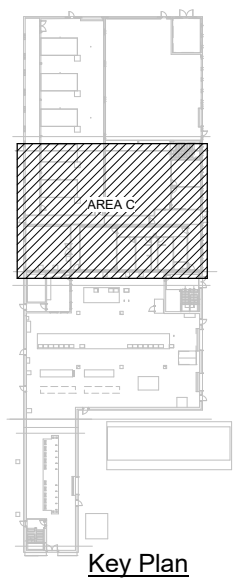
FILENAME
151600-M-34V18
BC PROJECT NUMBER
151600
CLIENT PROJECT NUMBER
CC30A

**MECHANICAL
BLOWER BUILDING
GROUND LEVEL
MECHANICAL PLAN
AREA C**

DRAWING NUMBER
M-34-1008



PLAN
SCALE: 3/16" = 1'-0"



Key Plan

Path: BIM_360/151600 - CVWRF Nutrients/151600-M-34V18.rvt
Plot Date: 3/3/2020 4:32:28 PM

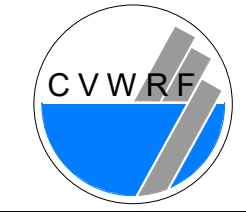
- KEYNOTES:**
- 1 RUN DUCTWORK AS HIGH AS POSSIBLE. COORDINATE ROUTING WITH ALL TRADES (TYPICAL).
 - 2 HIGH EFFICIENCY TAKE-OFF (TYPICAL).
 - 3 TURNING VANES (TYPICAL).
 - 4 HEATING/COOLING THERMOSTAT.
 - 5 KEEP STUD CAVITY CLEAR. PROVIDE OPENING ABOVE CEILING MINIMUM 14.5"x3.5". SEE DETAIL 2/M-34-5004.
 - 6 WALLS TO ABOVE CEILING (NOT TO DECK). RETURN AIR TO RUN IN CEILING PLENUM. (TYPICAL)
 - 7 VAV BOX. SEE DETAILS 1/M-34-6002 & 3/M-34-5004



6975 Union Park Center
Salt Lake City, UT



BID ISSUE



NUTRIENT REMOVAL CC30A BLOWER BUILDING

REVISIONS

REV	DATE	DESCRIPTION
A	3/3/20	CC30A Addendum 3

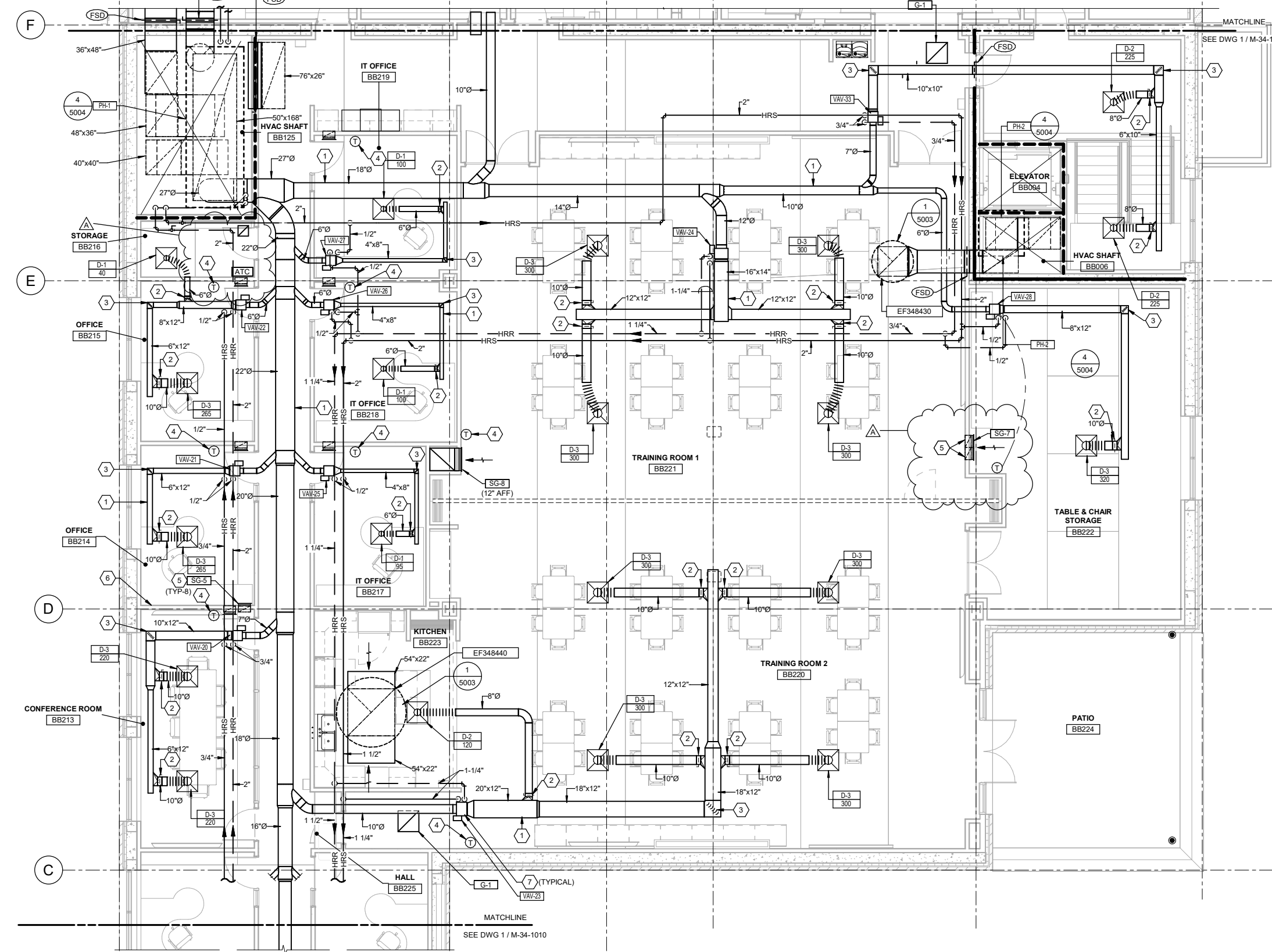
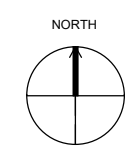
LINE IS 2 INCHES AT FULL SIZE

DESIGNED: J. BERRETT
DRAWN: B. SEARE
CHECKED: C. GREENWELL
APPROVED: J. BERRETT

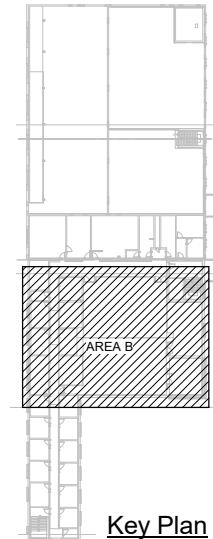
FILENAME: 151600-M-34V18
BC PROJECT NUMBER: 151600
CLIENT PROJECT NUMBER: CC30A

MECHANICAL BLOWER BUILDING SECOND LEVEL MECHANICAL PLAN AREA B

DRAWING NUMBER
M-34-1011



PLAN
SCALE: 3/16" = 1'-0"



Key Plan

Plot Date: 3/2/2020 4:32:31 PM Path: BIM_360/151600 - CVWRF Nutrients/151600-M-34V18.rvt