

ADDENDUM NO. 2

TO PROSPECTIVE BIDDERS UNDER
CONSTRUCTION CONTRACT CC30C
SIDESTREAM PHOSPHORUS REMOVAL PROJECT
Central Valley Water Reclamation Facility

RECEIPT OF THIS ADDENDUM MUST BE ACKNOWLEDGED IN THE BID FORM

This addendum will be attached to the Agreement and is a Contract Document

Addendum No. 2 consists of:

1. **Answers to Bidder's Questions:**

Q1- A valve list has been supplied in spec 40 05-60.10 on recent CV projects. I cannot find a valve list, is there a valve list for this portion?

A1- A valve list has not been generated for this project.

Q2- (I-30-6002) on 6" STR line, calls out FCV302100, on sheet P-30-3002, note 10-FCV30100, says pre-purchased by owner, FCV302100, does not have note 10 by it, should we assume that valve is pre-purchased also?

A2- Both valves are provided by the equipment vendor as part of the negotiated price.

Q3- Sheet I-30-6005 /6006, on the 8" A line, there are (2) ea 8" double leaf check valves, I cannot find a spec. Can you provide specifications?

A3- The check valves in question are part of the vendor package. No specification is available or needed.

Q4- On Sheet S-30-4201, section 4, there is a SS W* shoring the deck of the existing tunnel where the wall is removed for access to the utility chase. Can you provide a weight per foot for this W8?

A4- Please refer to the plan view where the beam in question is indicated as W8x13.75.

Q5- Sheet S-30-4201, Detail A, shows a lifting lug welded on the edge of the utility chase covers, can you provide a thickness for this lifting lug?

A5- The thickness is 3/8".

Q6- Sheet S-30-1001, in the North West corner of the Reactor room there is a cover plate over the utility chase where several pipes come up through the floor. Does the cover plate need to be built in many different pieces, or can it be one piece with the pipe fed through the holes in the cover plate?

A6- The cover plate is envisioned to be at least two pieces, however a single plate may be considered during the shop drawing phase.

Q7- Can you provide sheet C-00-1316, We need this sheet for the continuation of the 8" FLT and the 2 NG shown on sheet C-00-1311.

A7- Neither of the pipes in question are part of the work in this contract. They are related to the future Sidestream Nitrogen project.

Q8- Can I assume that the 3" OF lines shown on sheet P-3—4003 are schedule 80 PVC?

A8- Yes that is correct.

Q9- Sheet C-00-1311 refers to details shown on sheets C-00-3055, 3056 and 3057, please provide those sheets.

A9- Similar to Question 7 above, the 2" NG installation and the sheets requested are related to the future Sidestream Nitrogen Project and are not part of this scope of work for CC30C Sidestream Phosphorus Removal.

Q10- PPRC pipe: Is Aqua Therm an approved equal?

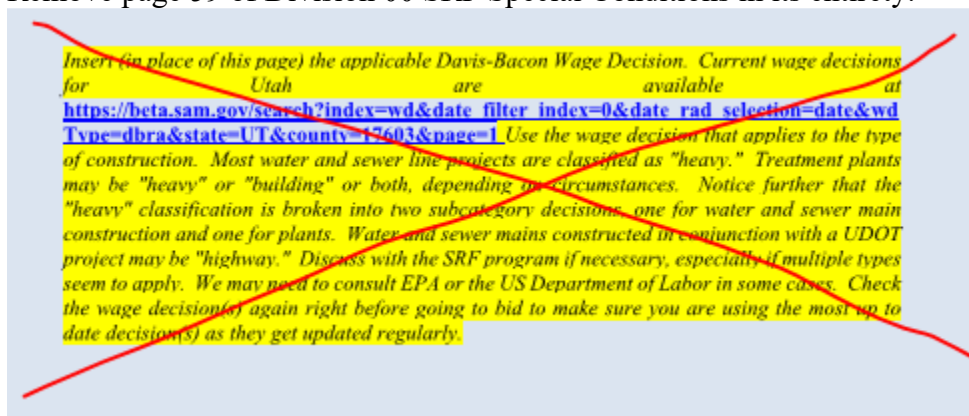
A10- Determination of any products to be considered an Approved Equal will be done during the submittal review phase and not during the Bid Phase. Note that the specification requires a 30 year warranty.

2. Directives/Clarifiers

a) None.

3. Specifications:

- a) Specifications Table of Contents list both 07 81 00 and 07 84 10 as Through-Penetration Firestop Systems. Update to 07 81 00 Sprayed Fire-Resistive Materials.
- b) Replace the Sample Step Certification Letter in Division 00 American Iron and Steel Requirement Guidance (page 45 of SRF Special Conditions) with the one attached as Attachment A of this Addendum.
- c) Remove page 59 of Division 00 SRF Special Conditions in its entirety.



d) Delete 09 91 00 Architectural Paint in its entirety.

e) Add Subsection 8, as shown below, under Section F of part 2 Embedded Flashing Materials, Weep, and Cavity Drainage of Specification 04 20 10 Atlas Brick Masonry

8. Install Vent holes in head joints in exterior withes of second course of masonry immediately below top of wall:
 - a. Use specifies weep/vent product to form vent holes.
 - b. Space vent holes 32 inches on center (o.c) unless otherwise indicated.

9. **Drawings:**

- a. Replace or add the following drawings with the attached drawings:
 - 1) Replace A-30-6002 with the attached.

10. **Attachments:**

Attachment A – Sample Step Certification Letter

Date: January 4, 2021



END OF SECTION

Sample Step Certification Letter

The following information is provided as a sample letter of **step** certification for AIS compliance. Documentation must be provided on company letterhead.

Date
Company Name
Company Address
City, State Zip

Subject: American Iron and Steel Certification for Project (XXXXXXXXXXXX)

I, (company representative), certify that the (melting, bending, coating, galvanizing, cutting, etc.) process for (manufacturing or fabricating) the following products and/or materials shipped or provided for the subject project is in full compliance with the American Iron and Steel requirement as mandated in EPA's State Revolving Fund Programs.

Item, Products and/or Materials:

1. Xxxx
2. Xxxx
3. Xxxx

Such process took place at the following location:

If any of the above compliance statements change while providing material to this project we will immediately notify the prime contractor and the engineer.

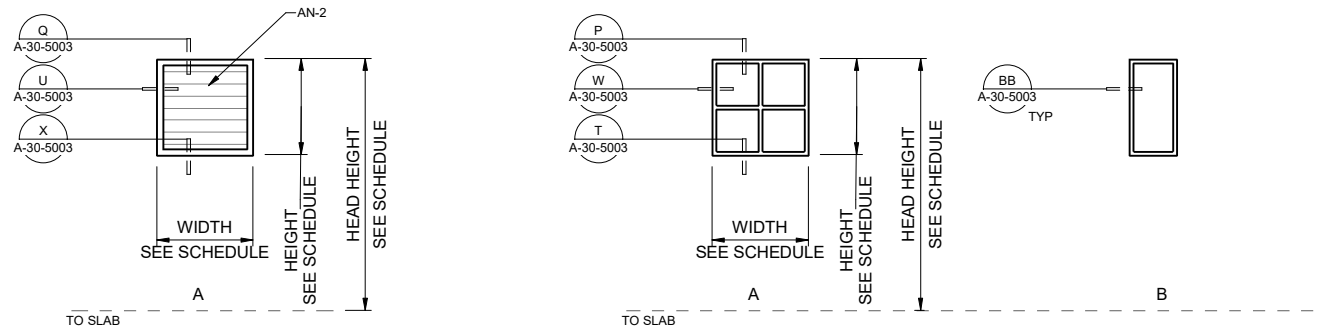
Signed by company representative

ROOM SCHEDULE										
BUILDING	ROOM NAME	NUMBER	FLOOR	WALLS, WAINSCOT, BASES				CEILING		REMARKS
				NORTH WALL	EAST WALL	SOUTH WALL	WEST WALL	TYPE	HEIGHT	
SSP	REACTOR ROOM	SSP101	SC-1	P-4	P-4	P-4	P-4	P-7	17'-0"	
SSP	ELECTRICAL ROOM	SSP102	SC-1	P-4	P-4	P-4	P-4	P-7	17'-0"	
SSP	CONTAINMENT AREA	SSP103	EP-1	P-4 EPOXY	P-4 EPOXY	P-4 EPOXY	P-4 EPOXY	P-7	17'-0"	
SSP	PPE CLO	SSP104	SC-1	P-4	P-4	P-4	P-4	P-7	17'-0"	

COLOR SCHEDULE					
MARK	MATERIAL	MANUFACTURER	COLOR	STYLE NUMBER	REMARKS
EP-1	NON-SKID EPOXY FLOOR	SHERWIN WILLIAMS	GRAY	STD COLOR	SEE SPECIFICATION 09 90 00
SC-1	CONCRETE FLOOR SEALER	RAIN GUARD	CLEAR	RAIN GUARD FLOOR LOCK WITH MICRO-LOC	SEE SPECIFICATION 09 90 00
SC-2	CONCRETE AND MASONRY WALL SEALER	BASF	CLEAR	MASTER PROTECT H107	SEE SPECIFICATION 09 90 00
P-1	EPOXY PAINT EXTERIOR	SHERWIN WILLIAMS	ENDURING BRONZE	SW 7055	EXTERIOR TRIM - SEE SPECIFICATION 09 90 00 - SYSTEM EU-1, L-3, L-6
P-2	RAL POWDER COAT PAINT	RAL COLORS	BRONZE	RAL 8011	OVERHEAD COILING DOORS
P-3	EPOXY PAINT INTERIOR	SHERWIN WILLIAMS	EXTRA WHITE	SW 7006	METAL ROOF DECK AND STRUCTURAL FRAMING - SEE SPECIFICATION 09 90 00 - SYSTEM: E-1, E-1-G
P-4	PAINT INTERIOR	SHERWIN WILLIAMS	SHOJI WHITE	SW 7042	INTERIOR WALLS SERVICE AREAS - SEE SPECIFICATION 09 90 00 - SYSTEM: L-1
P-7	LATEX PAINT INTERIOR	SHERWIN WILLIAMS	EXTRA WHITE	SW 7006	ROOF DECK AND BEAMS CONCRETE AND FIRE PROOFING - SEE SPECIFICATION 09 90 00 - SYSTEM: L-1
AN-1	ALUMINUM	SPECIAL-LITE	MEDIUM BRONZE	ANODIZED	DOOR FRAMES
AN-2	ALUMINUM		CLEAR ANODIZED		WINDOW FRAMES, PARAPET COPING, AND MECHANICAL LOUVERS
FRP-1	FRP	SPECIAL-LITE	BRONZE	PEBBLE FINISH	DOOR AND TRANSOM

A-WINDOW SCHEDULE									
BUILDING	WINDOW NO.	WINDOW			FRAME MATERIAL	FRAME FINISH	WINDOW GLAZING	HEAD HEIGHT	REMARKS
		WIDTH	HEIGHT	TYPE					
SSP	SSP101	4' - 0"	4' - 0"	A	ALUM	AN-2	G-1	10' - 0"	ULTRA THERMAL FRAME
SSP	SSP102	4' - 0"	4' - 0"	A	ALUM	AN-2	G-1	10' - 0"	ULTRA THERMAL FRAME
SSP	SSP103	4' - 0"	4' - 0"	A	ALUM	AN-2	G-1	10' - 0"	ULTRA THERMAL FRAME
SSP	SSP104	4' - 0"	4' - 0"	A	ALUM	AN-2	G-1	10' - 0"	ULTRA THERMAL FRAME
SSP	SSP105	2' - 0"	3' - 4"	B	SST	SST	G-4	7' - 4"	90 MIN FIRE RATED

GLAZING TYPES	
G1	1" THICK INSULATING GLASS: 1/4" TINTED FLOAT GLASS EXTERIOR AND 1/4" CLEAR FLOAT GLASS INTERIOR WITH 1/2" AIR SPACE. TINT: PPG SOLARBAN 60 GRAY, LOW-E
G2	1" THICK INSULATING GLASS TEMPERED: 1/4" TINTED TEMPERED GLASS EXTERIOR AND 1/4" CLEAR TEMPERED GLASS INTERIOR WITH 1/2" AIR SPACE. TINT: PPG SOLARBAN 60 GRAY, LOW-E
G3	1/4" CLEAR TEMPERED GLASS
G4	CLEAR 90 MIN FIRE-RATED GLASS



2 LOUVER TYPES
SCALE: 1/4" = 1'-0"

3 WINDOW TYPES
SCALE: 1/4" = 1'-0"



6975 Union Park Center
Salt Lake City, UT



2 Pepperwood Pointe
Sandy, Utah 84092
Cell: 801-647-8043
Office: 801-572-1997
ftarch@xmission.com

BID SET



NUTRIENT REMOVAL
CC30C SIDESTREAM
PHOSPHORUS
REMOVAL

REVISIONS

REV	DATE	DESCRIPTION
A	12/15/20	CC30C ADDENDUM 2

LINE IS 2 INCHES
AT FULL SIZE

DESIGNED: F. THALMANN
DRAWN: T. BOUFFARD
CHECKED: D. CRAWFORD
APPROVED: F. THALMANN

FILENAME
151600-A-30V18
BC PROJECT NUMBER
151600
CLIENT PROJECT NUMBER
CC30C

ARCHITECTURAL
SIDESTREAM
PHOSPHORUS
SCHEDULES 2

DRAWING NUMBER
A-30-6002

Path: BIM_360/151600 - CVWRF Nutrients/151600-A-30V18.rvt
Plot Date: 12/15/2020 12:48:40 PM